

WA900-3 KOMATSU

**Operating Weight**

226,810 lb

102 880 kg

Bucket Capacity

15.0-17.0 yd³

11.5-13.0 m³

Horsepower

853 hp

637 kW



WA900-3

SPECIFICATIONS

WHEEL LOADER



Engine

Model	Komatsu SAA12V140ZE-2
Type	Water-cooled, 4 cycle
Aspiration	Turbocharged, aftercooled
No. of cylinders	12
Bore x stroke	5.51" x 6.5" 140 mm x 165mm
Piston displacement	1861 in ³ 30.5 ltr
Governor	Electronic fuel control
Horsepower rating @ 2000 rpm	
Gross horsepower	897 hp 669 kW (SAEJ1349)
	910 PS 669 kW (DIN 6270)
Flywheel horsepower	853 hp 637 kW (SAEJ1349)
	865 PS 637 kW (DIN 6270)

Meets 2000 EPA emissions regulations

Fuel system	Direct injection
Lubrication system	
Method	Gear pump, pressurized lubrication
Filter	Full flow type
Air cleaner	Two stage, exhaust aspirated, dry type with service indicator in cab



Transmission

Torque converter 3 element, single stage, single phase
Transmission: Komatsu full power-shift planetary gear-type transmission. A modulating function assures shockless speed and direction changes without braking. An electrically controlled transmission allows fingertip control with speed and directional change levers. A neutral safety circuit allows starting only when the directional control lever is in neutral position.

Travel Speed*	Forward	Reverse
1st	0-4.3 mph 7.0 km/h	0-4.4 mph 7.1 km/h
2nd	0-7.6 mph 12.3 km/h	0-7.7 mph 12.4 km/h
3rd	0-17.4 mph 28.0 km/h	0-17.6 mph 28.3 km/h

*Measured with 45/64-45, 58PR (L5) tires



Axles & Final Drives

Four-wheel drive system. Full-floating front axle is fixed to the front frame. Center-pin-supported, full-floating rear axle with a large oscillation of ±11°. A spiral bevel gear for reduction, a straight bevel gear for differential, and a planetary gear for final reduction.



Brakes

Service brakes: Hydraulically-actuated, wet multi-disc brakes actuated on four wheels.

Parking brake: Spring applied, hydraulically released, dry disc type, on the front axle pinion shaft.



Steering System

Komatsu joystick/steering wheel control system featuring full hydraulic steering wheel plus joystick control. Steering wheel has full priority when used. Wide articulation angle of 40° to each side for a minimum turning radius of 36' 4" 11 065 mm at the outside corner of the bucket with teeth.



Operating Weight

Includes rated capacity of lubricant, coolant, full fuel tank, 45/65-45-58PR (L5) tires, 17.0 yd³ 13.0 m³ spade nose bucket with teeth, ROPS canopy, steel cab, additional counterweight, operator and other standard equipment.

Operating weight 226,810 lb 102 880 kg



Boom & Bucket

Z-bar loader linkage of high-tensile-strength steel provides maximum rigidity, fast cycle times, and superior breakout force. Rap-out loader linkage design enables shock dumping to remove sticky materials. Sealed loader linkage pins with dust seals and cord rings extend maintenance intervals. The bucket is also constructed of high-tensile-strength steel. Bucket corner teeth increase penetrating force and minimize bucket wear.

Cycle Times	Standard Boom	High Lift Boom
Raise	11.2 sec	11.6 sec
Lower	4.8 sec	4.8 sec
Dump	2.0 sec	2.0 sec
Total	18.0 sec	18.4 sec



Bucket Controls

Proportional Pressure Control (PPC) system assures light-touch work equipment control. Little effort is required to operate the bucket and boom control levers, assuring smooth, responsive bucket/boom action. The bucket positioner and the boom kickout device facilitate repeated digging/loading operations.

Control positions:

Boom	Raise, hold, lower, and float
Bucket	Rollback, hold, and dump



Hydraulic System

Two variable capacity piston pumps for loader control, two variable capacity piston pumps for switch and two fixed displacement pumps for steering control. Dual hydraulic speed system makes it possible to reduce cycle times. Rimpull is maintained when entering the pile, so digging capacity is increased. Boom speed is increased during lift to minimize cycle time.

Pumps

Loader	Variable displacement piston pumps with output of 107 gpm 405 liters/min @ 2000 rpm
Switch	Variable displacement pumps with output 107 gpm 405 liters/min @ 2000 rpm
Steering	Fixed displacement pumps with output of 81 gpm 307 liters/min @ 2000 rpm
Pilot	Gear pump with output of 18 gpm 68 liters/min @ 2000 rpm

Main relief valve setting 4977 psi 350 kg/cm²
Steering relief valve setting 4550 psi 320 kg/cm²

Control valves: A double-spool-type control valve and steering valve with demand valve.

Hydraulic Cylinder	Number of cylinders	Bore	Stroke
Boom	2	10.2" 260 mm	53.9" 1368 mm
Bucket	1	11.8" 300 mm	35.7" 906 mm
Steering	2	6.3" 160 mm	19.8" 503 mm



Service Refill Capacities

Cooling system	79.5 U.S. gal	319 L
Fuel tank	376.5 U.S. gal	1425 L
Crankcase*	34.9 U.S. gal	132 L
Hydraulic system	191.5 U.S. gal	725 L
Axle (each front and rear)	95.1 U.S. gal	360 L
Torque converter and transmission	37.0 U.S. gal	140L
Brake Oil	8.2 U.S. gal	31L

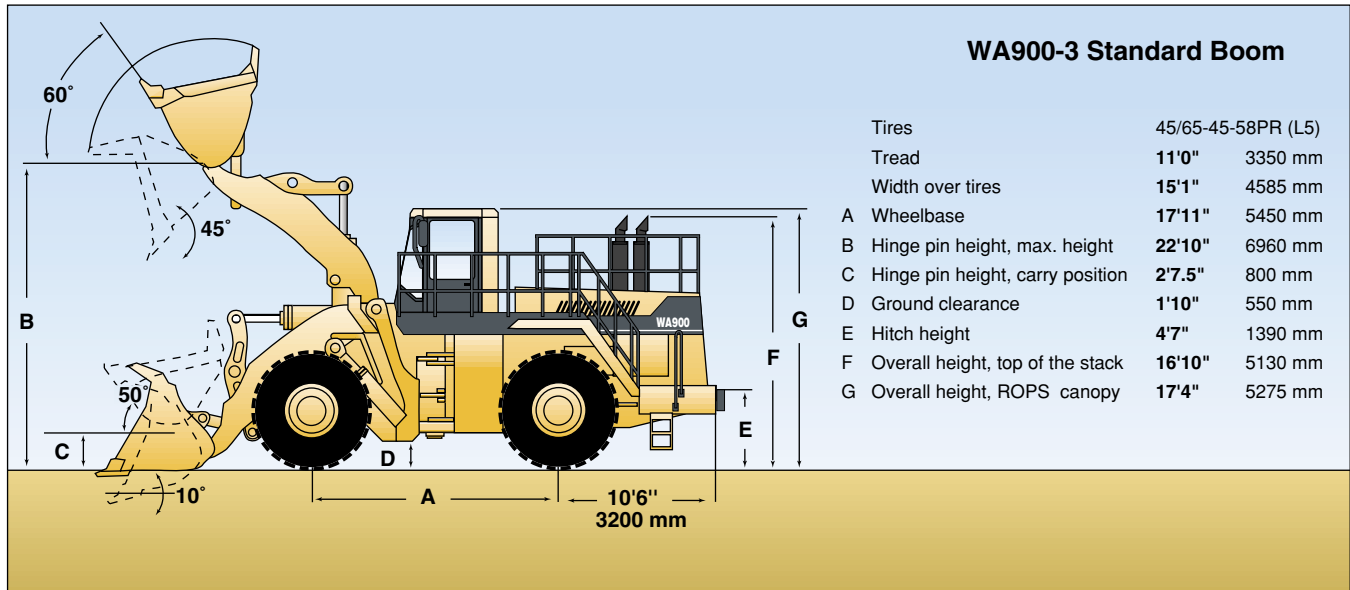
* includes lube oil filters



Tires & Rims

Select proper tires based on job requirements.

Standard rim size	36.00-45
Standard tire size	45/65-45-58PR (L5)



Bucket Type	Standard Boom		High Lift Boom		
	17.0 yd ³ 13 m ³ Spade Nose Rock w/ teeth		15 yd ³ 11.5 m ³ Spade Nose Rock w/ teeth		
Bucket capacity	SAE rated	17.0 yd ³	13.0 m ³	15.0 yd ³	11.5 m ³
	Struck	14.4 yd ³	11.0 m ³	12.4 yd ³	9.5 m ³
Bucket width		15' 10"	4815 mm	15' 10"	4815 mm
Bucket width w/tire protector		16' 7"	5045 mm	16' 7"	5045 mm
Bucket weight		25,770 lb	11 690 kg	24,160 lb	10 960 kg
*Static tipping loads	Straight	145,815 lb	66 140 kg	137,880 lb	62 540 kg
	Full turn (40°)	128,310 lb	58 200 kg	121,320 lb	55 030 kg
Dumping clearance, max. height and 45° dump angle		15' 6"	4715 mm	17' 6"	5330 mm
Reach at max. height and 45° dump angle		8' 0"	2450 mm	7' 4"	2230 mm
Height to hinge pin (fully raised)		22' 10"	6960 mm	24' 5"	7445 mm
Operating height (fully raised)		31' 9"	9680 mm	32' 5"	9875 mm
Overall length	Bucket on ground	47' 4"	14 430 mm	49' 0"	14 935 mm
	Bucket at carry	46' 2"	14 065 mm	48' 6"	14 780 mm
Turning radius outside corner of bucket		36' 4"	11 065 mm	36' 7"	11 150 mm
Digging depth	0°	0' 2"	50 mm	0' 2"	50 mm
	10°	1' 11"	585 mm	1' 10"	550 mm
Breakout force		149,690 lb	665 kN	158,070 lb	703 kN
*Operating weight		226,810 lb	102 880 kg	227,760 lb	103 310 kg

Static tipping load and operating weight shown include lubricants, coolant, full fuel tank, ROPS cab (option), front and rear fenders, additional counter weight, 45/65-45-58PR (L5) tubeless tires and operator. Machine stability and operating weight are affected by counterweight, tire size and other attachments. Turning radius measured at outside corner of bucket with bucket at carry position. All dimensions, weights and performance values based on SAE J732c and J742b standards.

Note: * Engineering estimated weights. WA900-3 will not weigh less than WA900-1 machine.



WA900-3

Standard Equipment

- Additional work lights: 2F, 2S, 2R, 1R step with timer
- Alternator 75 ampere (24 V)
- Air cleaner, 2 stage dry type with auto dust evacuator
- Air cleaner extension
- Air conditioner with heater/defroster/pressurizer
- Auxiliary steering, ground driven with indicator
- Axles, full floating type w/conventional differentials
- Back-up alarm and light
- Batteries, 4 x 12 V/200 A/h
- Battery auto-disconnect switch
- Boom kickout, automatic
- Brakes, parking dry disc
- Brakes, service, wet multiple-disc axle by axle
- Bucket leveler, automatic
- Cab, steel, (RH & LH entrance) includes: windshield washer and wiper (front and rear), inside-mounted mirror, two cab-mounted working lights, dome light, floor mat and cigarette lighter/ashtray
- Counterweight
- Electric horn
- Engine, KOMATSU SAA12V140ZE-2 turbocharged and aftercooled Direct injection diesel
- Engine shut down switch, ground level
- Exhaust pipe with sound suppression, glasswool

- Fan, cooling blower
- Fenders, front (LH & RH)
- High pressure in-line hydraulic filters
- Main and maintenance monitor - electronic display
- Lift cylinders and bucket cylinder
- Lights: stop and tail lights, turn signals with hazard switch (2F, 2R), work lights (2F, 2R)
- Lunch box holder
- PPC hydraulic controls
- Power train guard
- Power windows
- Radiator, staggered core type
- Radio, AM/FM with cassette stereo
- Rearview mirror, inside cab mount/outside mount (LH & RH)
- Rear steps, (LH) with partial fenders
- ROPS cab
- Seatbelt, retractable 3"
- Seat, air-suspension, reclining, with arm rests (fabric)
- Starting motor, 24V 1 X 11 kW, direct electric
- Steering, full hydraulic power, steering wheel tiltable
- Stick-Steer, single lever controlled steering system
- Sun visor
- Tow hitch
- Transmission, planetary, F3-R3
- Transmission control, electric w/ kickdown switch
- Vandalism protection

Optional Equipment

- Auto grease system, Lincoln
- Automatic transmission
- Bucket
 - 11.5cu m³/15cu yd³ for high lift boom
 - 12.3cu m³/16cu yd³ for high lift boom (light material 2850 lb/yd³, 1700 kg/m³)
 - 13cu m³/17cu yd³ for std. boom
- High lift arrangement
 - ◆ Boom
 - ◆ Boom cylinders
 - ◆ Bucket cylinders
 - ◆ Counterweight
- Rims for 45/65-45 tires

Tires:

- ◆ 45/65-45-58PR L5
- ◆ 45/65-R45 46PR XLDD2 (Michelin)
- Wiggins fast fuel fill

Work Equipment

- 17.0 yd³ (13 m³) spade nose heavy-duty rock bucket
- 15.0 yd³ (11.5 m³) spade nose heavy-duty rock bucket (for high lift)
- Komatsu Buckets with Hensley Lips and GET (Bladesaver® II system)

AESS503-01

©2000 Komatsu Printed in USA

(7M)EH

12/00 (EV-2)

KOMATSU®

Komatsu Mining Systems, Inc.
568 Atrium Dr., P.O. Box 8131
Vernon Hills, IL 60061-8131