

RELIABILITY IN ACTION



LINGONG HEAVY MACHINERY CO., LTD.

Address: No. 2676, Kejia Road, Jinan, Shandong, China  
Email: sales@gmg.com.cn  
Tel: +86-0531-67879283  
Web: www.lgmglifts.com

LGMG Europe B.V.  
Address: Donker Duyvisweg 301, 3316 BL Dordrecht, The Netherlands

LGMG North America, Inc.  
Address: 1445 Sheffler Dr, Chambersburg, PA. 17201, USA



www.lgmglifts.com

Please contact LGMG or local dealer for more details.  
LGMG reserves the right to change technical data without prior notice.  
All photos and pictures in this brochure are for promotional purpose only.  
This brochure comes into effect in January, 2023.

# LGMG

## MOBILE ELEVATING WORK PLATFORMS



# CONTENTS



P01-02 Contents

P03-06 Group Profile

P07-10 Electric Telescopic Boom Lift

P11-16 Diesel Telescopic Boom Lift

P17-18 Electric Articulating Boom Lift

P19-20 Diesel Articulating Boom Lift

P21-22 Electric RT Scissor Lift

P23-26 Diesel RT Scissor Lift

P27-30 Telehandlers

P31-36 Electric Motor Drive Scissor Lift

P37-40 Hydraulic Motor Drive Scissor Lift

P41-42 Vertical Mast Lift

P43-44 Crawler Scissor Lift

P45-46 Service & Application

# GROUP PROFILE

Founded in 1972, Lingong Machinery Group is one of the key players in construction machinery, one of the top 100 enterprises in the machinery industry and one of the top four groups in the construction machinery industry in China.

The Group consists of three core companies, including: Shandong Lingong Construction Machinery Co., Ltd. (SDLG), Lingong Heavy Machinery Co., Ltd. (LGMG) and Lingong Special Machinery Co., Ltd. The Group's business covers five sectors: construction machinery, mining machinery, MEWPs, special machinery and component manufacturing.

LGMG, located in Jinan, Shandong Province, China, is a privately-owned subsidiary of Lingong Group. Business segments include MEWPs, mining equipment. Today, LGMG has become an important player in the Chinese construction machinery industry, holding a place as one of the top 100 global construction machinery manufacturers, the top 30 Chinese construction machinery manufacturers and the top 5 Chinese MEWPs manufacturers.

LGMG offers a wide range of access equipment, electric and rough terrain scissor lifts, articulating and telescopic boom lifts. In 2022, telehandlers have been added to LGMG's product line.

In 2018, LGMG Europe was established in the Netherlands to serve as a distribution and service hub for the EMEA market.

In 2019, LGMG North America opened a headquarters in Pennsylvania together with other three warehouses across the country.

In 2020, LGMG Japan was established, integrating marketing and technology research and development functions into one.

In the future, LGMG will also establish multiple branches in Australia and other places. Now LGMG is on the road of internationalization, moving forward steadily, building LGMG into an international brand.



## R&D TEAM

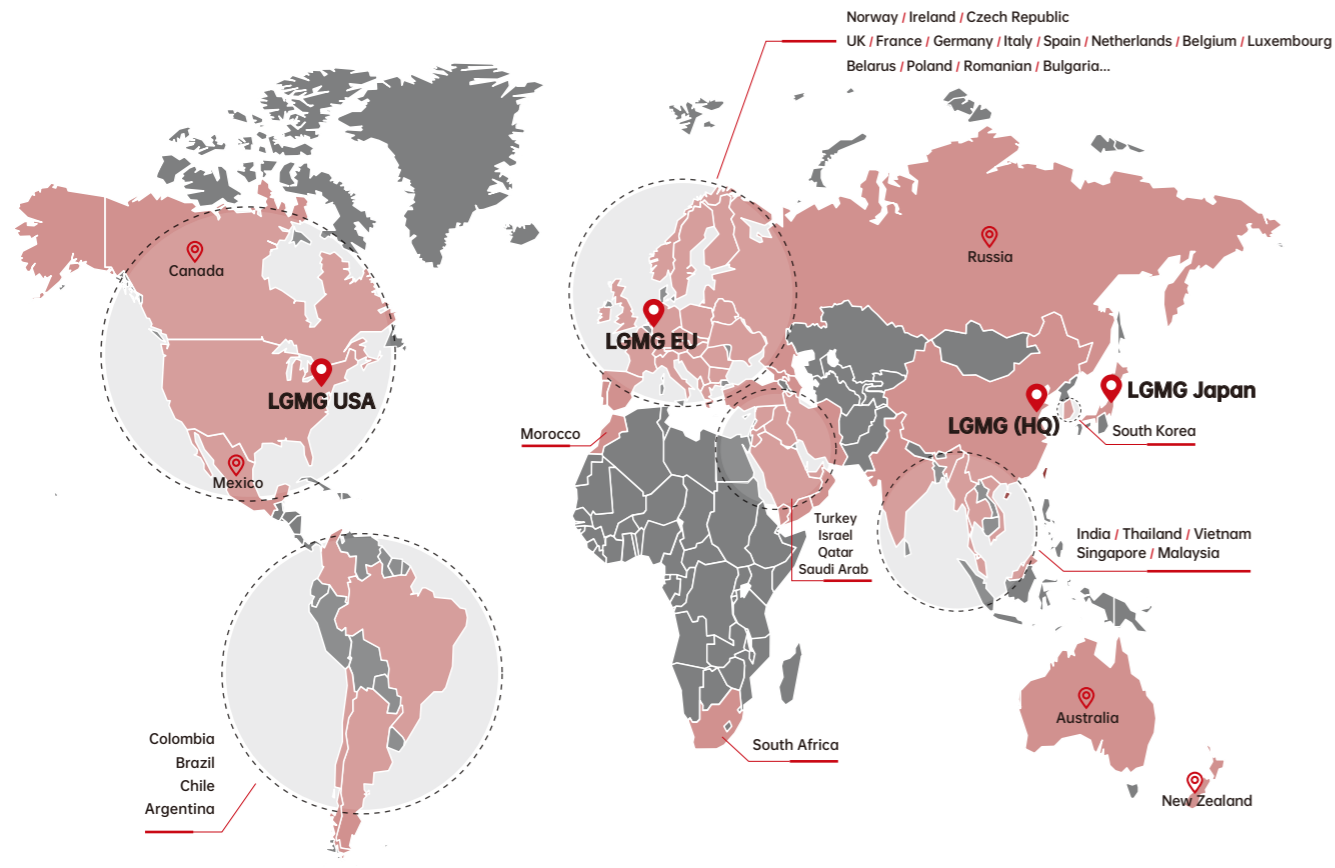
LGMG sees that R&D and innovation are key for sustainable growth, and has therefore established the Provincial Level Innovation, for new product development and component reliability tests. In addition, LGMG has collaborated with a top Chinese university to establish the LGMG Research Institute, aiming to crack industry challenges and develop cutting edge technology, as well as have a profound effect on the cultivation on future talent for our industry.



## MANUFACTURING

With the manufacturing base covering an area of 350,000 square meters, LGMG strictly abides by its Lean Production System (LPS 6 PRINCIPLES) for each procedure, from parts welding and painting, to machine assembling and final product inspection, to ensure the highest production efficiency and the best quality.

# GLOBAL SALES NETWORK



📍 LGMG Europe B.V.



📍 LGMG North America, Inc.



📍 LGMG Japan Co., Ltd.



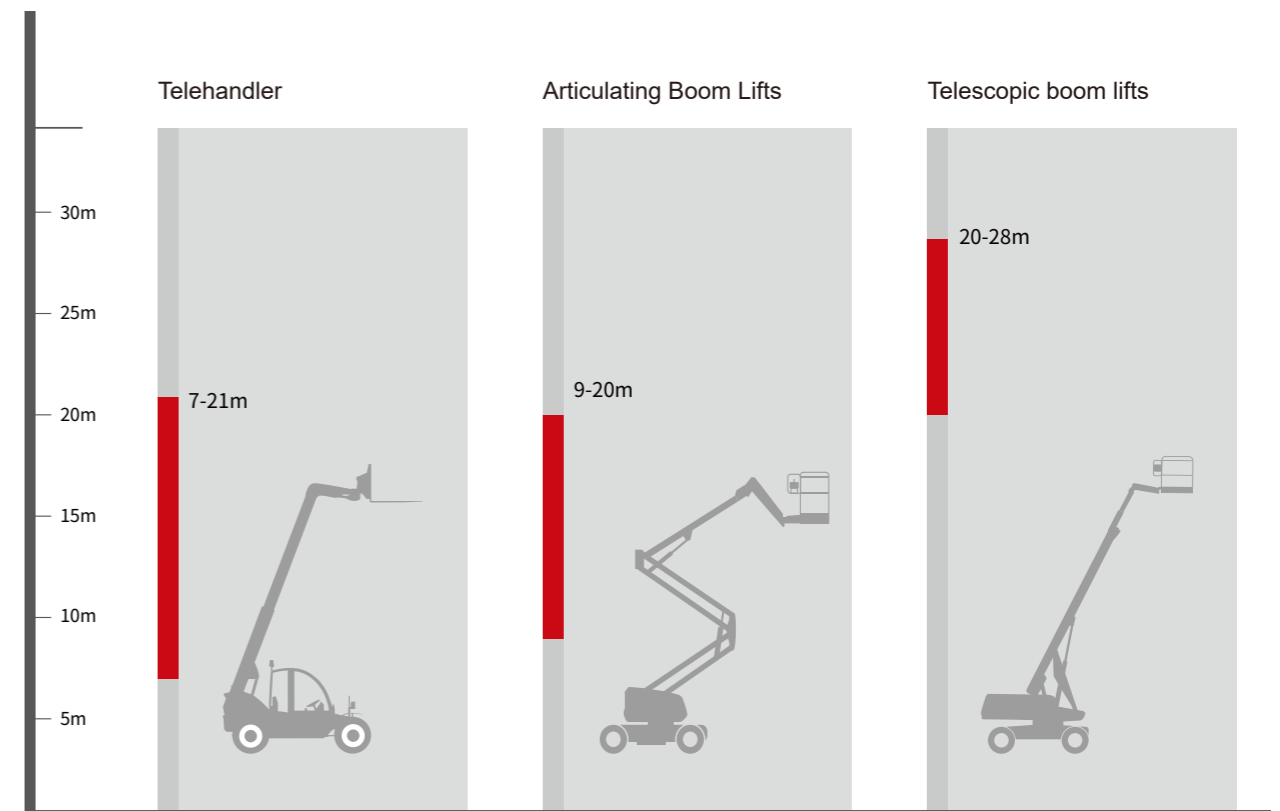
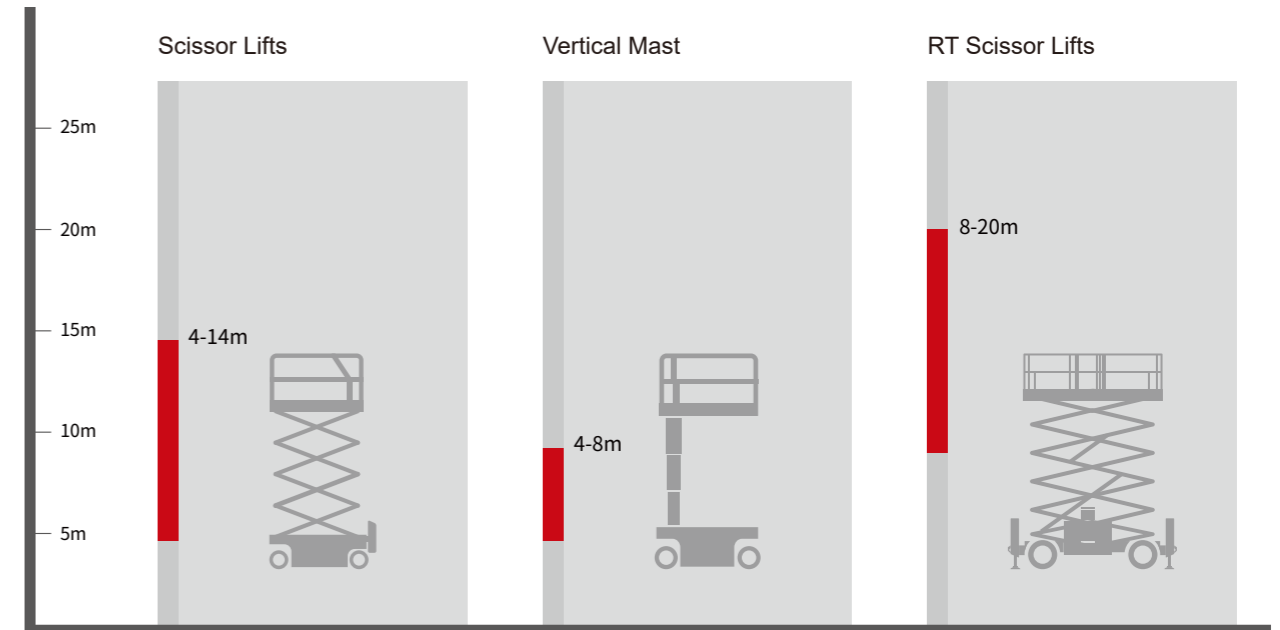
**200+ PARTNERS**

**50+ COUNTRIES**

- LOCAL TEAM SUPPORT**
- LOCAL MACHINE DELIVERY**
- LOCAL SPARE PARTS**
- LOCAL FAST AND HIGH QUALITY SERVICE**
- LOCAL TRAINING**

The establishment of LGMG European, North American and Japan companies has ensured quick and effective response time which fully meets our customers' requirements on machine inventory, parts and support with local professional teams. LGMG products have passed the major international standards such as CE, ANSI, Australia AS, CSA, KC, JIS, EAC. Products have been sold to over 200 partners in more than 50 countries around the world, including the U.S., Canada, the U.K., Germany, the Netherlands, Italy, Spain, Korea and Japan.

# PRODUCT RANGE





LGMG's new electric telescopic boom aerial work platform is equipped with a lithium battery, which has the advantages of low noise and zero emissions. The maximum working height of the platform ranges from 21.8 to 29.8 meters (71'6" / 97'9"). Platform accommodates up to 3 people and 450/300 kg (992/661 lbs) dual capacity design for increased work efficiency. Excellent performance in driving performance, stability and operating precision, suitable for various harsh working environments.

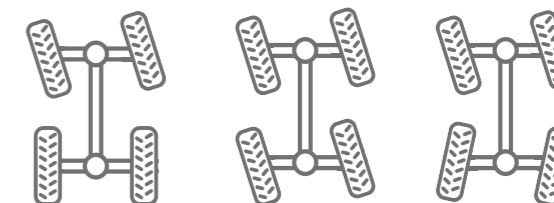
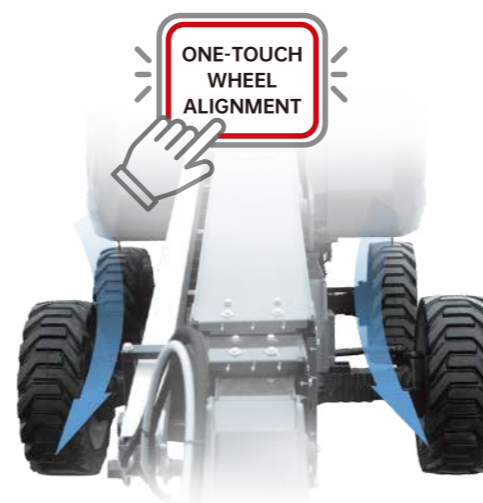
## FEATURES

### Green technology, eco-friendly

- Completely electric drive, noiseless, zero-emission, energy-saving, and eco-friendly.
- Ultra-high capacity lithium battery, 100% maintenance-free, smart battery management system, super-long battery life.
- Various charging modes are available as standard, and a charging pile port is available as optional.

### Excellent RT performance

- Integrated four-wheel-drive system with axles offering strong power and smooth transmission, and 45% gradeability.
- Oscillating, full-time floating axle, maximum 5 degree tilt angle chassis. It allows the wheels to grip the ground when driving on hard, uneven terrain.



- Equipped with three steering modes: four-wheel steering, crab steering, and front-wheel steering, the boom lifts are also capable of one-touch wheel alignment.

### More comfortable operation

- Proportional lift and drive controls deliver smoother manoeuvring, precise positioning and comfortable operation.



### Higher maintenance efficiency

- More than 95% of the main components are interchangeable and so are more than 80% of structural parts, which helps to reduce spare parts storage costs and improve maintenance efficiency.
- Intelligent self-diagnostic system for quick troubleshooting and reduced downtime.

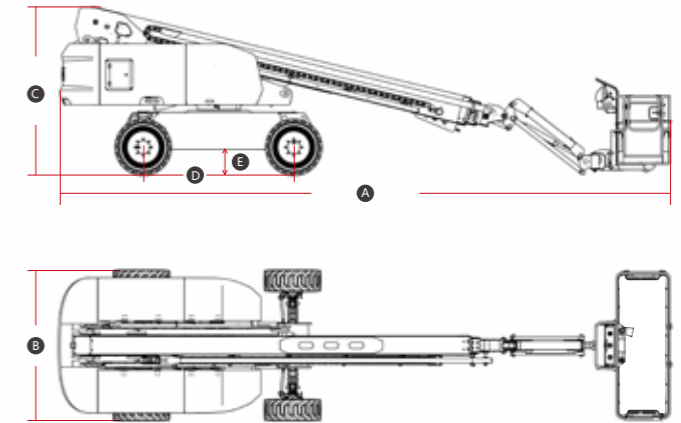
# SPECIFICATIONS

| MODELS                           | T20JE (T65JE)                     |           | T22JE (T72JE)  |           | T26JE (T85JE)  |           | T28JE (T92JE)  |           |
|----------------------------------|-----------------------------------|-----------|----------------|-----------|----------------|-----------|----------------|-----------|
| Measurements                     | Metric                            | Imperial  | Metric         | Imperial  | Metric         | Imperial  | Metric         | Imperial  |
| Work Height Max.                 | 21.8m                             | 71'6"     | 23.8m          | 78'1"     | 27.9m          | 91'6"     | 29.8m          | 97'9"     |
| Platform Height                  | 19.8m                             | 65'       | 21.8m          | 71'6"     | 25.9m          | 85'       | 27.8m          | 91'2"     |
| Horizontal Outreach Max.         | 16.6m                             | 54'6"     | 16.6m          | 54'6"     | 21.6m          | 70'10"    | 21.6m          | 70'10"    |
| Platform Length                  | 2.44m                             | 8'        | 2.44m          | 8'        | 2.44m          | 8'        | 2.44m          | 8'        |
| Platform Width                   | 0.9m                              | 2'11"     | 0.9m           | 2'11"     | 0.9m           | 2'11"     | 0.9m           | 2'11"     |
| <b>A</b> Length-Stowed           | 10.2m                             | 33'6"     | 11m            | 36'1"     | 12.8m          | 42'       | 13.4m          | 44'       |
| Length-Transport (jib tucked)    | 8.3m                              | 27'3"     | 9.03m          | 29'8"     | 11m            | 36'1"     | 11.47m         | 37'8"     |
| <b>B</b> Overall Width           | 2.5m                              | 8'2"      | 2.5m           | 8'2"      | 2.5m           | 8'2"      | 2.5m           | 8'2"      |
| <b>C</b> Height-Stowed           | 2.77m                             | 9'1"      | 2.77m          | 9'1"      | 2.82m          | 9'3"      | 2.82m          | 9'3"      |
| Height-Transport                 | 2.89m                             | 9'6"      | 2.88m          | 9'5"      | 3.03m          | 9'11"     | 3.02m          | 9'11"     |
| <b>D</b> Wheelbase               | 2.51m                             | 8'3"      | 2.51m          | 8'3"      | 2.85m          | 9'4"      | 2.85m          | 9'4"      |
| <b>E</b> Ground Clearance        | 0.4m                              | 1'4"      | 0.4m           | 1'4"      | 0.4m           | 1'4"      | 0.4m           | 1'4"      |
| <b>PRODUCTIVITY</b>              |                                   |           |                |           |                |           |                |           |
| Platform Capacity (unrestricted) | 300kg                             | 661 lbs   | 300kg          | 661 lbs   | 300kg          | 661 lbs   | 300kg          | 661 lbs   |
| Platform Capacity (restricted)   | 450kg                             | 992 lbs   | 450kg          | 992 lbs   | 450kg          | 992 lbs   | 450kg          | 992 lbs   |
| Max. Platform Occupancy          | 2 (unrestricted) / 3 (restricted) |           |                |           |                |           |                |           |
| Turntable Rotation               | 360°Continuous                    |           | 360°Continuous |           | 360°Continuous |           | 360°Continuous |           |
| Drive Speed-Stowed               | 5km/h                             | 3.1mph    | 5km/h          | 3.1mph    | 5km/h          | 3.1mph    | 5km/h          | 3.1mph    |
| Drive Speed-Raised               | 0.8km/h                           | 0.5mph    | 0.8km/h        | 0.5mph    | 0.8km/h        | 0.5mph    | 0.8km/h        | 0.5mph    |
| Gradeability                     | 45%                               |           | 45%            |           | 45%            |           | 45%            |           |
| Max. Wind Speed                  | 12.5m/s                           | 28mph     | 12.5m/s        | 28mph     | 12.5m/s        | 28mph     | 12.5m/s        | 28mph     |
| Turning Radius-Inside            | 1.9m                              | 6'3"      | 1.9m           | 6'3"      | 2.04m          | 6'8"      | 2.04m          | 6'8"      |
| Turning Radius-Outside           | 3.9m                              | 12'10"    | 3.9m           | 12'10"    | 4.13m          | 13'7"     | 4.13m          | 13'7"     |
| Max. Slope                       | 5°/5°                             |           | 5°/5°          |           | 5°/5°          |           | 5°/5°          |           |
| Tire Type                        | RT Foam-filled                    |           | RT Foam-filled |           | RT Foam-filled |           | RT Foam-filled |           |
| Tire Size                        | 355/55D625                        |           | 355/55D625     |           | 15-625         |           | 15-625         |           |
| <b>POWER</b>                     |                                   |           |                |           |                |           |                |           |
| Power                            | 80V DC 375Ah                      |           | 80V DC 375Ah   |           | 80V DC 542Ah   |           | 80V DC 542Ah   |           |
| <b>HYDRAULIC SYSTEM</b>          |                                   |           |                |           |                |           |                |           |
| Hydraulic Oil Volume             | 120L                              | 31.7gal   | 120L           | 31.7gal   | 138L           | 36.5gal   | 138L           | 36.5gal   |
| <b>WEIGHT</b>                    |                                   |           |                |           |                |           |                |           |
| Machine Weight (CE/ANSI)         | 12000kg                           | 26455 lbs | 12300kg        | 27117 lbs | 18200kg        | 40124 lbs | 18700kg        | 41226 lbs |

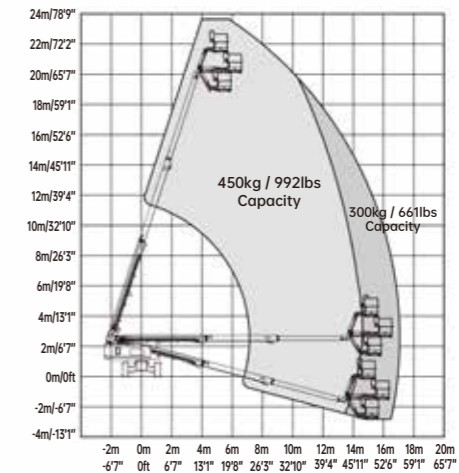
## STANDARD FEATURES

- Proportional control
- Overload sensing system
- Descent alarm with flashing beacon
- Platform auto-leveling system
- Emergency stop button
- On-board diagnostic system
- Oscillating axle
- 4W drive, 4W steering, 4W full-time floating
- Over-tilt protection system
- Anti-collision protection
- Platform control cover
- Cylinder bellows

## MACHINE SIZE



## T22JE WORKING RANGE



## OPTIONAL

- AC power to platform
- Telematics
- Half and full aluminium platform mesh
- Glazier kit
- Auxiliary rail
- Battery isolator switch (double pole)
- White noise alarm
- Non-marking tires
- Solid tires



**High Capacity**  
**High Productivity**

LGMG has a complete line of engine-driven, high-capacity telescopic boom aerial work platforms, with the maximum working height ranging from 21.8 to 29.8 meters (71'6"/97'9"). With a double capacity design of 450/300kg (992/661 lbs), the machine can allow up to 3 people to work at the same time both indoors and outdoors, which greatly improves work efficiency.

## FEATURES

- Oscillating, full-floating axle, maximum 5 degree tilt angle chassis, allows the wheels to grip to the ground when navigating hard, uneven terrain.
- Proportional lift and drive controls deliver smoother maneuvering, precise positioning and comfortable operation.
- Automatic engine speed control with a boom that descends by gravity. Allows smooth movement, saves energy, and reduces noise.
- Intelligent diagnostic and control system with precise fault analysis, convenient and efficient.
- More than 95% of the main components and more than 80% of the structural parts are interchangeable, which helps to reduce spare parts storage costs and improve maintenance efficiency.

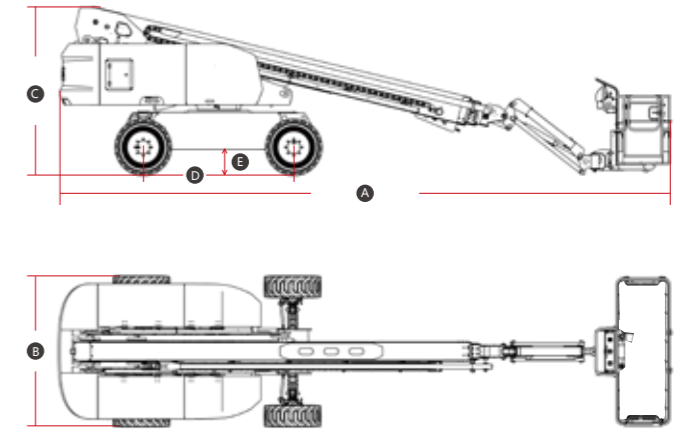
# SPECIFICATIONS

| MODELS                           | T20J-H (T65J-H)                   |           | T22J-H (T72J-H) |           | T26J-H (T85J-H)              |           | T28J-H (T92J-H) |           |
|----------------------------------|-----------------------------------|-----------|-----------------|-----------|------------------------------|-----------|-----------------|-----------|
| Measurements                     | Metric                            | Imperial  | Metric          | Imperial  | Metric                       | Imperial  | Metric          | Imperial  |
| Work Height Max.                 | 21.8m                             | 71'6"     | 23.8m           | 78'1"     | 27.9m                        | 91'6"     | 29.8m           | 97'9"     |
| Platform Height                  | 19.8m                             | 65'       | 21.8m           | 71'6"     | 25.9m                        | 85'       | 27.8m           | 91'2"     |
| Horizontal Outreach Max.         | 16.6m                             | 54'6"     | 16.6m           | 54'6"     | 21.6m                        | 70'10"    | 21.6m           | 70'10"    |
| Platform Length                  | 2.44m                             | 8'        | 2.44m           | 8'        | 2.44m                        | 8'        | 2.44m           | 8'        |
| Platform Width                   | 0.9m                              | 2'11"     | 0.9m            | 2'11"     | 0.9m                         | 2'11"     | 0.9m            | 2'11"     |
| <b>A</b> Length-Stowed           | 10.2m                             | 33'6"     | 11m             | 36'1"     | 12.72m                       | 41'9"     | 13.4m           | 44'       |
| Length-Transport (jib tucked)    | 8.3m                              | 27'3"     | 9.03m           | 29'8"     | 11m                          | 36'1"     | 11.47m          | 37'8"     |
| <b>B</b> Overall Width           | 2.49m                             | 8'2"      | 2.49m           | 8'2"      | 2.5m                         | 8'2"      | 2.5m            | 8'2"      |
| <b>C</b> Height-Stowed           | 2.78m                             | 9'1"      | 2.78m           | 9'1"      | 2.83m                        | 9'3"      | 2.83m           | 9'3"      |
| Height-Transport                 | 2.89m                             | 9'6"      | 2.88m           | 9'5"      | 3.03m                        | 9'11"     | 3.02m           | 9'11"     |
| <b>D</b> Wheelbase               | 2.51m                             | 8'3"      | 2.51m           | 8'3"      | 2.85m                        | 9'4"      | 2.85m           | 9'4"      |
| <b>E</b> Ground Clearance        | 0.4m                              | 1'4"      | 0.4m            | 1'4"      | 0.43m                        | 1'5"      | 0.43m           | 1'5"      |
| <b>PRODUCTIVITY</b>              |                                   |           |                 |           |                              |           |                 |           |
| Platform Capacity (unrestricted) | 300kg                             | 661 lbs   | 300kg           | 661 lbs   | 300kg                        | 661 lbs   | 300kg           | 661 lbs   |
| Platform Capacity (restricted)   | 450kg                             | 992 lbs   | 450kg           | 992 lbs   | 450kg                        | 992 lbs   | 450kg           | 992 lbs   |
| Max. Platform Occupancy          | 2 (unrestricted) / 3 (restricted) |           |                 |           |                              |           |                 |           |
| Turntable Rotation               | 360°Continuous                    |           | 360°Continuous  |           | 360°Continuous               |           | 360°Continuous  |           |
| Drive Speed-Stowed               | 4.8km/h                           | 3mph      | 4.8km/h         | 3mph      | 4.8km/h                      | 3mph      | 4.8km/h         | 3mph      |
| Drive Speed-Raised               | 0.8km/h                           | 0.5mph    | 0.8km/h         | 0.5mph    | 0.8km/h                      | 0.5mph    | 0.8km/h         | 0.5mph    |
| Gradeability                     | 45%                               |           | 45%             |           | 45%                          |           | 45%             |           |
| Max. Wind Speed                  | 12.5m/s                           | 28mph     | 12.5m/s         | 28mph     | 12.5m/s                      | 28mph     | 12.5m/s         | 28mph     |
| Turning Radius-Inside            | 2.5m                              | 8'2"      | 2.5m            | 8'2"      | 3.66m                        | 12'       | 3.66m           | 12'       |
| Turning Radius-Outside           | 5.5m                              | 18'       | 5.5m            | 18'       | 6.55m                        | 21'6"     | 6.55m           | 21'6"     |
| Max. Slope                       | 5°/5°                             |           | 5°/5°           |           | 5°/5°                        |           | 5°/5°           |           |
| Tire Type                        | RT Foam-filled                    |           | RT Foam-filled  |           | RT Foam-filled               |           | RT Foam-filled  |           |
| Tire Size                        | 355/55D625                        |           | 355/55D625      |           | 18-625                       |           | 18-625          |           |
| <b>POWER</b>                     |                                   |           |                 |           |                              |           |                 |           |
| Power                            | Deutz D2.9L4 / Kubota V2403       |           |                 |           | Deutz TD2.9L4 / Kubota V3307 |           |                 |           |
| Fuel Tank Capacity               | 100L                              | 26.4gal   | 100L            | 26.4gal   | 100L                         | 26.4gal   | 100L            | 26.4gal   |
| <b>HYDRAULIC SYSTEM</b>          |                                   |           |                 |           |                              |           |                 |           |
| Hydraulic Oil Volume             | 180L                              | 47.5gal   | 180L            | 47.5gal   | 180L                         | 47.5gal   | 180L            | 47.5gal   |
| <b>WEIGHT</b>                    |                                   |           |                 |           |                              |           |                 |           |
| Machine Weight (CE/ANSI)         | 12000kg                           | 26455 lbs | 12300kg         | 27117 lbs | 18300kg                      | 40345 lbs | 18800kg         | 41447 lbs |

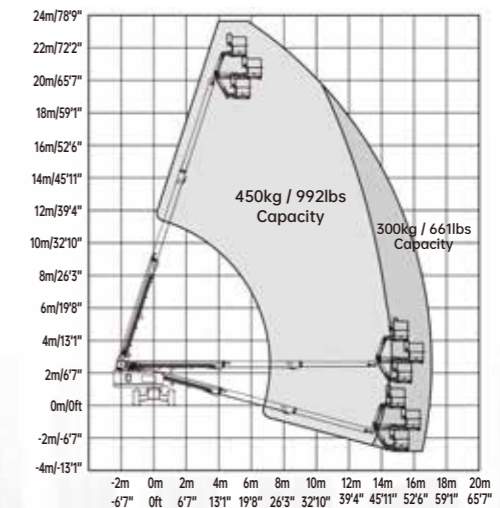
## STANDARD FEATURES

- Proportional control
- Overload sensing system
- Descent alarm with flashing beacon
- Platform auto-leveling system
- Emergency stop button
- On-board diagnostic system
- Oscillating axle
- Over tilt protection system
- Anti-collision protection
- Platform control cover
- Cylinder bellows
- 2.44m large working platform

## MACHINE SIZE



## T22J-H WORKING RANGE



## OPTIONAL

- AC power to platform
- Telematics
- Hydraulic generator
- Half and full aluminium platform mesh
- Glazier kit
- Auxiliary rail
- Battery isolator switch (double pole)
- White noise alarm
- Start motor isolator switch (double pole)
- Non-marking tires
- Solid tires



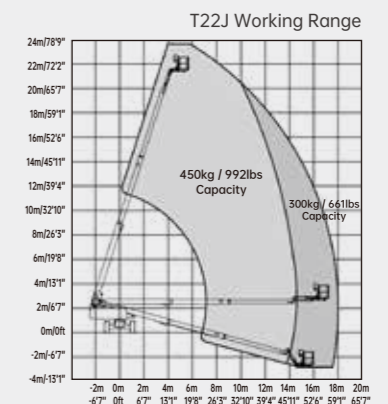
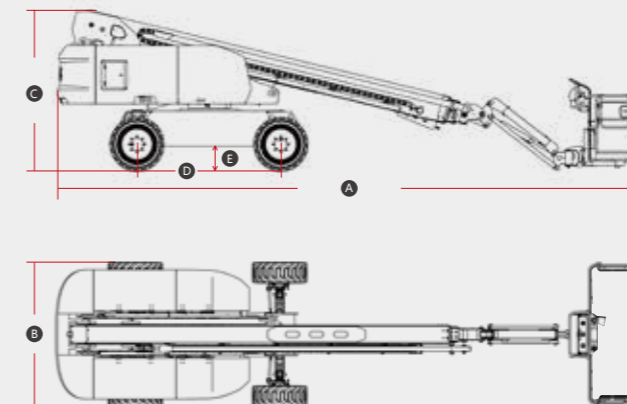


LGMG T Series telescopic boom lifts offer great outreach with high working efficiency. Its exceptional all terrain capacities allow the machine to operate on the roughest ground and complete the tasks on time.

- Oscillating axles and four-wheel drive deliver better gradeability on rough terrain.
- Proportional control ensures smooth driving, precise positioning and comfortable operation.
- Continuous 360° turntable rotation expands the operational area and makes operations more convenient.
- Swing out engine tray for easy access and maintenance.
- Intelligent self-diagnostic system for quick troubleshooting.

### SPECIFICATIONS

| MODELS                           | T20J (T65J)    |           | T22J (T72J)                       |           | T26J (T85J)                       |           |
|----------------------------------|----------------|-----------|-----------------------------------|-----------|-----------------------------------|-----------|
| Measurements                     | Metric         | Imperial  | Metric                            | Imperial  | Metric                            | Imperial  |
| Work Height Max.                 | 21.7m          | 71'2"     | 23.8m                             | 78'1"     | 27.9m                             | 91'6"     |
| Platform Height                  | 19.7m          | 64'8"     | 21.8m                             | 71'6"     | 25.9m                             | 85'       |
| Horizontal Outreach Max.         | 17.2m          | 56'5"     | 17.5m                             | 57'5"     | 23.32                             | 76'6"     |
| Platform Length                  | 2.44m          | 8'        | 2.44m                             | 8'        | 2.44m                             | 8'        |
| Platform Width                   | 0.9m           | 2'11"     | 0.9m                              | 2'11"     | 0.9m                              | 2'11"     |
| <b>A</b> Length-Stowed           | 9.47m          | 31'1"     | 10.6m                             | 34'9"     | 12.6m                             | 41'4"     |
| Length-Transport (jib tucked)    | 8.44m          | 27'8"     | 9.18m                             | 30'1"     | 10.9m                             | 35'9"     |
| <b>B</b> Overall Width           | 2.5m           | 8'2"      | 2.49m                             | 8'2"      | 2.5m                              | 8'2"      |
| <b>C</b> Height-Stowed           | 2.77m          | 9'1"      | 2.79m                             | 9'2"      | 2.84m                             | 9'4"      |
| Height-Transport                 | 2.92m          | 9'7"      | 2.92m                             | 9'7"      | 2.99m                             | 9'10"     |
| <b>D</b> Wheelbase               | 2.51m          | 8'3"      | 2.51m                             | 8'3"      | 2.85m                             | 9'4"      |
| <b>E</b> Ground Clearance        | 0.4m           | 1'4"      | 0.4m                              | 1'4"      | 0.44m                             | 1'5"      |
| <b>PRODUCTIVITY</b>              |                |           |                                   |           |                                   |           |
| Platform Capacity (unrestricted) | 250kg          | 551 lbs   | 300kg                             | 661 lbs   | 250kg                             | 551 lbs   |
| Platform Capacity (restricted)   | /              | /         | 450kg                             | 992 lbs   | 340kg                             | 750 lbs   |
| Max. Platform Occupancy          | 2              |           | 2 (unrestricted) / 3 (restricted) |           | 2 (unrestricted) / 3 (restricted) |           |
| Turntable Rotation               | 360°Continuous |           | 360°Continuous                    |           | 360°Continuous                    |           |
| Drive Speed-Stowed               | 4.8km/h        | 3mph      | 4.8km/h                           | 3mph      | 4.8km/h                           | 3mph      |
| Drive Speed-Raised               | 0.8km/h        | 0.5mph    | 0.8km/h                           | 0.5mph    | 0.8km/h                           | 0.5mph    |
| Gradeability                     | 45%            | 45%       | 45%                               | 45%       | 45%                               | 45%       |
| Max. Wind Speed                  | 12.8m/s        | 28mph     | 12.8m/s                           | 28mph     | 12.8m/s                           | 28mph     |
| Turning Radius-Inside            | 2.5m           | 8'2"      | 2.5m                              | 8'2"      | 3.66m                             | 12'       |
| Turning Radius-Outside           | 5.5m           | 18'1"     | 5.5m                              | 18'1"     | 6.55m                             | 21'6"     |
| Max. Slope                       | 4.5° / 4.5°    |           | 4.5° / 4.5°                       |           | 4.5° / 4.5°                       |           |
| Tire Type                        | RT Foam-filled |           | RT Foam-filled                    |           | RT Foam-filled                    |           |
| Tire Size                        | 355/55D625     |           | 355/55D625                        |           | 18-625                            |           |
| <b>POWER</b>                     |                |           |                                   |           |                                   |           |
| Power                            | Deutz D 2.9L4  |           | Deutz D 2.9L4                     |           | Deutz TD 2.9L4                    |           |
| Fuel Tank Capacity               | 100L           | 26.4gal   | 100L                              | 26.4gal   | 100L                              | 26.4gal   |
| <b>HYDRAULIC SYSTEM</b>          |                |           |                                   |           |                                   |           |
| Hydraulic Oil Volume             | 180L           | 47.5gal   | 180L                              | 47.5gal   | 180L                              | 47.5gal   |
| <b>WEIGHT</b>                    |                |           |                                   |           |                                   |           |
| Machine Weight (CE/ANSI)         | 11400kg        | 25132 lbs | 12300kg                           | 27117 lbs | 18000kg                           | 39683 lbs |



**PART 4**

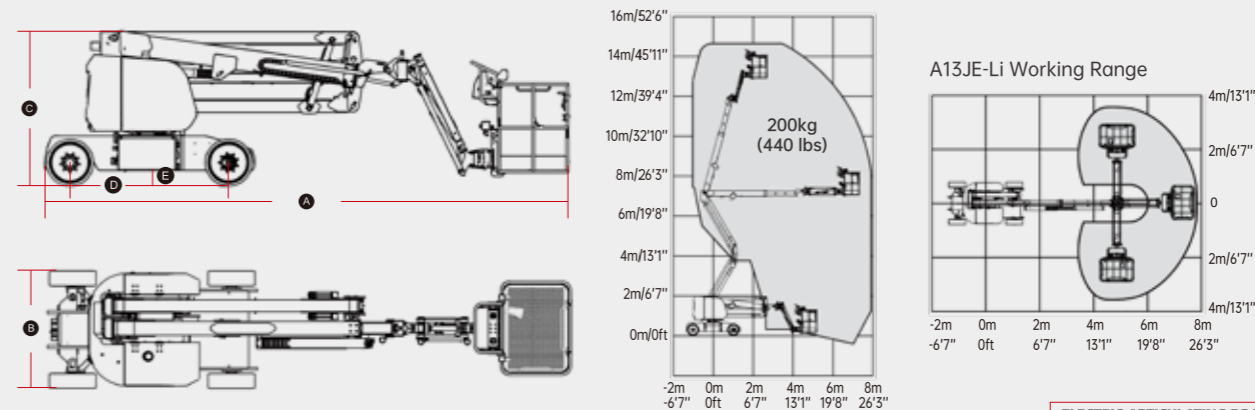
**A09JE / A13JE-Li / A14JE / AR20JE**  
**ELECTRIC ARTICULATING BOOM LIFT**

LGMG electric articulating boom aerial work platforms provide environmentally friendly, zero-emission operation for indoor and outdoor applications. The maximum working height ranges from 11 to 21.58 meters (36'1"/70'10").

- Proportional control ensures smooth driving, precise positioning and comfortable operation.
- Battery powered provides quiet and long battery duty cycle.
- Self-leveling platform together with hydraulic platform rotation delivers exceptional productivity.
- Intelligent self-diagnostic system for quick troubleshooting.
- AR20JE are equipped with the oscillating, full-time floating axle, and three steering modes: four-wheel steering, crab steering and front-wheel steering.

**SPECIFICATIONS**

| MODELS                           | A09JE (A30JE)     |           | A13JE-Li (A42JE-Li) |           | A14JE (A45JE) |           | AR20JE (AR65JE)                   |           |
|----------------------------------|-------------------|-----------|---------------------|-----------|---------------|-----------|-----------------------------------|-----------|
| Measurements                     | Metric            | Imperial  | Metric              | Imperial  | Metric        | Imperial  | Metric                            | Imperial  |
| Work Height Max.                 | 11m               | 36'1"     | 15m                 | 49'3"     | 15.8m         | 51'10"    | 21.58m                            | 70'10"    |
| Platform Height                  | 9m                | 29'6"     | 13m                 | 42'8"     | 13.8m         | 45'3"     | 19.58m                            | 64'3"     |
| Horizontal Outreach              | 6.25m             | 20'6"     | 7.46m               | 24'6"     | 7.81m         | 25'7"     | 12.37m                            | 40'7"     |
| Up and Over Height               | 4.12m             | 13'6"     | 7.1m                | 23'4"     | 7.26m         | 23'10"    | 8.19m                             | 26'10"    |
| Platform Length                  | 1.17m             | 3'10"     | 1.2m                | 3'11"     | 1.83m         | 6'        | 2.44m                             | 8'        |
| Platform Width                   | 0.76m             | 2'6"      | 0.9m                | 2'11"     | 0.76m         | 2'6"      | 0.9m                              | 2'11"     |
| Platform Capacity (unrestricted) | 230kg             | 507 lbs   | 200kg               | 440 lbs   | 230kg         | 510 lbs   | 260kg                             | 573 lbs   |
| Platform Capacity (restricted)   | /                 | /         | /                   | /         | /             | /         | 350kg                             | 772 lbs   |
| <b>A</b> Stowed Length           | 5.46m             | 17'11"    | 6.7m                | 22'       | 6.66m         | 21'10"    | 9.42m                             | 30'11"    |
| <b>B</b> Overall Width           | 1.19m             | 3'11"     | 1.5m                | 4'11"     | 1.8m          | 5'11"     | 2.5m                              | 8'2"      |
| <b>C</b> Stowed Height           | 2m                | 6'7"      | 1.98m               | 6'6"      | 1.98m         | 6'6"      | 2.46m                             | 8'1"      |
| <b>D</b> Wheelbase               | 1.58m             | 5'2"      | 2.03m               | 6'8"      | 2.03m         | 6'8"      | 2.51m                             | 8'3"      |
| <b>E</b> Ground Clearance        | 0.09m             | 4"        | 0.2m                | 8"        | 0.24m         | 9"        | 0.4m                              | 1'4"      |
| <b>PRODUCTIVITY</b>              |                   |           |                     |           |               |           |                                   |           |
| Max. Platform Occupancy          | 2                 |           | 2                   |           | 2             |           | 2 (unrestricted) / 3 (restricted) |           |
| Turntable Rotation               | 355°              | 355°      | 355°                | 355°      | 355°          | 355°      | 360°                              | 360°      |
| Drive Speed-Stowed               | 5km/h             | 3.1mph    | 5km/h               | 3.1mph    | 4.8km/h       | 3mph      | 5km/h                             | 3.1mph    |
| Drive Speed-Raised               | 0.65km/h          | 0.4mph    | 0.8km/h             | 0.5mph    | 1km/h         | 0.62mph   | 0.8km/h                           | 0.5mph    |
| Gradeability                     | 30%               | 30%       | 30%                 | 30%       | 30%           | 30%       | 45%                               | 45%       |
| Max. Wind Speed                  | 12.5m/s           | 28mph     | 12.5m/s             | 28mph     | 12.5m/s       | 28mph     | 12.5m/s                           | 28mph     |
| Turning Radius-Inside            | 1.65m             | 5'5"      | 2.2m                | 7'3"      | 1.83m         | 6'        | 1.9m                              | 6'3"      |
| Turning Radius-Outside           | 3.15m             | 10'4"     | 4.07m               | 13'4"     | 4.1m          | 13'5"     | 3.9m                              | 12'10"    |
| Max. Slope                       | 2.5°/4.5°         | 2.5°/4.5° | 3°/3°               | 3°/3°     | 3°/3°         | 3°/3°     | 4°/4°                             | 4°/4°     |
| Tire Type                        | Solid Non-marking |           | Solid Non-marking   |           | Foam-filled   |           | RT Foam-filled                    |           |
| Tire Size                        | 560x180mm         | 22"x7"    | 600x190mm           | 24"x7"    | 9-14.5        |           | 355/55D625                        |           |
| <b>POWER</b>                     |                   |           |                     |           |               |           |                                   |           |
| Lead-acid Battery                | 48V 390Ah         |           | /                   |           | 48V 390Ah     |           | /                                 |           |
| Lithium Battery                  | /                 |           | 48V 250Ah           |           | 48V 280Ah     |           | 80V 271Ah                         |           |
| <b>HYDRAULIC SYSTEM</b>          |                   |           |                     |           |               |           |                                   |           |
| Hydraulic Oil Volume             | 17L               | 4.5gal    | 25L                 | 6.6gal    | 30L           | 7.9gal    | 77L                               | 20.3gal   |
| <b>WEIGHT</b>                    |                   |           |                     |           |               |           |                                   |           |
| Machine Weight (CE/ANSI)         | 6700kg            | 14770 lbs | 6950kg              | 15322 lbs | 7500kg        | 16535 lbs | 9700kg                            | 21385 lbs |



# AR14J / AR14J-H / AR16J / AR20J

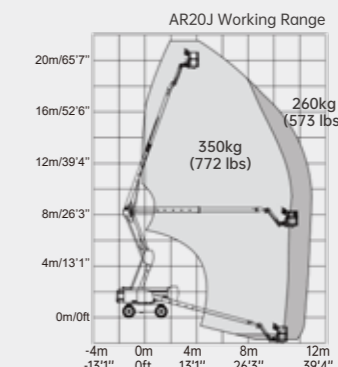
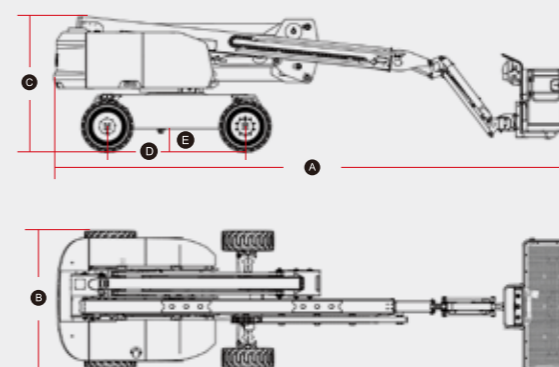
## DIESEL ARTICULATING BOOM LIFT

LGMG diesel-powered articulating boom aerial work platforms are purpose-built for outdoor construction and industrial applications, with the maximum working height ranging from 16.09 to 21.58 meters (52'9"/70'10").

- The oscillating axles and four-wheel drive deliver better gradeability on rough terrain.
- Proportional smooth driving, precise positioning and comfortable operation.
- Self-leveling platform together with hydraulic platform rotation delivers exceptional productivity.
- Swing out engine tray for easy access and maintenance.
- Intelligent self-diagnostic system for quick troubleshooting.
- AR14J-H and AR20J are fitted with the full-time floating axle and three steering models: four-wheel steering, crab steering and front-wheel steering.

### SPECIFICATIONS

| MODELS                           | AR14J (AR45J)                |           | AR14J-H (AR45J-H)                 |           | AR16J (AR52J)                |           | AR20J (AR65J)                     |           |
|----------------------------------|------------------------------|-----------|-----------------------------------|-----------|------------------------------|-----------|-----------------------------------|-----------|
| Measurements                     | Metric                       | Imperial  | Metric                            | Imperial  | Metric                       | Imperial  | Metric                            | Imperial  |
| Work Height Max.                 | 16.09m                       | 52'9"     | 15.9m                             | 52'2"     | 17.7m                        | 58'1"     | 21.58m                            | 70'10"    |
| Platform Height                  | 14.09m                       | 46'3"     | 13.9m                             | 45'7"     | 15.7m                        | 51'6"     | 19.58m                            | 64'3"     |
| Horizontal Outreach              | 7.67m                        | 25'2"     | 7.7m                              | 25'3"     | 9.39m                        | 30'10"    | 12.37m                            | 40'7"     |
| Up and Over Height               | 7.56m                        | 24'10"    | 7.4m                              | 24'3"     | 7.56m                        | 24'10"    | 8.19m                             | 26'10"    |
| Platform Length                  | 1.83m                        | 6'        | 1.83m                             | 6'        | 1.83m                        | 6'        | 2.44m                             | 8'        |
| Platform Width                   | 0.76m                        | 2'6"      | 0.76m                             | 2'6"      | 0.76m                        | 2'6"      | 0.9m                              | 2'11"     |
| Platform Capacity (unrestricted) | 230kg                        | 510 lbs   | 300kg                             | 661 lbs   | 230kg                        | 510 lbs   | 260kg                             | 573 lbs   |
| Platform Capacity (restricted)   | /                            | /         | 450kg                             | 992 lbs   | /                            | /         | 350kg                             | 772 lbs   |
| <b>A</b> Stowed Length           | 6.77m                        | 22'3"     | 6.95m                             | 22'10"    | 7.56m                        | 24'10"    | 9.42m                             | 30'11"    |
| <b>B</b> Overall Width           | 2.31m                        | 7'7"      | 2.3m                              | 7'7"      | 2.31m                        | 7'7"      | 2.5m                              | 8'2"      |
| <b>C</b> Stowed Height           | 2.17m                        | 7'1"      | 2.24m                             | 7'4"      | 2.17m                        | 7'1"      | 2.46m                             | 8'1"      |
| <b>D</b> Wheelbase               | 2.06m                        | 6'9"      | 2.25m                             | 7'5"      | 2.06m                        | 6'9"      | 2.51m                             | 8'3"      |
| <b>E</b> Ground Clearance        | 0.36m                        | 1'2"      | 0.35m                             | 1'2"      | 0.36m                        | 1'2"      | 0.4m                              | 1'4"      |
| <b>PRODUCTIVITY</b>              |                              |           |                                   |           |                              |           |                                   |           |
| Max. Platform Occupancy          | 2                            |           | 2 (unrestricted) / 3 (restricted) |           | 2                            |           | 2 (unrestricted) / 3 (restricted) |           |
| Turntable Rotation               | 355°                         | 355°      | 355°                              | 355°      | 355°                         | 355°      | 360°                              | 360°      |
| Drive Speed-Stowed               | 6.1km/h                      | 3.8mph    | 5km/h                             | 3.1mph    | 6.1km/h                      | 3.8mph    | 5km/h                             | 3.1mph    |
| Drive Speed-Raised               | 0.8km/h                      | 0.5mph    | 0.8km/h                           | 0.5mph    | 0.8km/h                      | 0.5mph    | 0.8km/h                           | 0.5mph    |
| Gradeability                     | 45%                          | 45%       | 45%                               | 45%       | 45%                          | 45%       | 45%                               | 45%       |
| Max. Wind Speed                  | 12.5m/s                      | 28mph     | 12.5m/s                           | 28mph     | 12.5m/s                      | 28mph     | 12.5m/s                           | 28mph     |
| Turning Radius-Inside            | 1.94m                        | 6'4"      | 1.67m                             | 5'6"      | 1.94m                        | 6'4"      | 1.9m                              | 6'3"      |
| Turning Radius-Outside           | 4.41m                        | 14'6"     | 3.66m                             | 12'       | 4.41m                        | 14'6"     | 3.9m                              | 12'10"    |
| Max. Slope                       | 4.5°/4.5°                    | 4.5°/4.5° | 5°/5°                             | 5°/5°     | 4.5°/4.5°                    | 4.5°/4.5° | 4°/4°                             | 4°/4°     |
| Tire Type                        | RT Foam-filled               |           | RT Foam-filled                    |           | RT Foam-filled               |           | RT Foam-filled                    |           |
| Tire Size                        | 315/55D20                    |           | 315/55D20                         |           | 315/55D20                    |           | 355/55D625                        |           |
| <b>POWER</b>                     |                              |           |                                   |           |                              |           |                                   |           |
| Power Source                     | Deutz D2.9L4<br>Kubota V2403 |           | Kubota V2403<br>Kubota D1105      |           | Deutz D2.9L4<br>Kubota V2403 |           | Kubota V2403                      |           |
| Fuel Tank Capacity               | 65L                          | 17.2gal   | 65L                               | 17.2gal   | 65L                          | 17.2gal   | 65L                               | 17.2gal   |
| <b>HYDRAULIC SYSTEM</b>          |                              |           |                                   |           |                              |           |                                   |           |
| Hydraulic Oil Volume             | 130L                         | 34.3gal   | 75L                               | 19.8gal   | 130L                         | 34.3gal   | 100L                              | 26.4gal   |
| <b>WEIGHT</b>                    |                              |           |                                   |           |                              |           |                                   |           |
| Machine Weight (CE/ANSI)         | 7160kg                       | 15785 lbs | 7400kg                            | 16314 lbs | 8180kg                       | 18034 lbs | 9850kg                            | 21715 lbs |





- The large platform with high capacity maximizes productivity.
- Battery powered, zero emission and quiet drive mean this machine is environmentally friendly.
- Equipped with oscillating axles that provide excellent performance in soft and rough terrain conditions.
- Hydraulic outriggers deliver a better solution on uneven ground.
- Intelligent self-diagnostic system for quick troubleshooting.

## SPECIFICATIONS

| MODELS                                      | SR0818E (SR2669E)       |          | SR1018E (SR3369E)       |          | SR1218E (SR4069E)       |           | SR1418E (SR4669E) |           |
|---|-------------------------|----------|-------------------------|----------|-------------------------|-----------|-------------------|-----------|
| Measurements                                | Metric                  | Imperial | Metric                  | Imperial | Metric                  | Imperial  | Metric            | Imperial  |
| Work Height Max.                            | 9.7m                    | 31'10"   | 11.7m                   | 38'5"    | 13.9m                   | 45'7"     | 15.8m             | 51'10"    |
| <b>A</b> Platform Height-Raised             | 7.7m                    | 25'3"    | 9.7m                    | 31'10"   | 11.9m                   | 39'       | 13.8m             | 45'3"     |
| <b>B</b> Platform Height-Stowed             | 1.41m                   | 4'8"     | 1.41m                   | 4'8"     | 1.56m                   | 5'1"      | 1.75m             | 5'9"      |
| <b>C</b> Platform Length                    | 2.79m                   | 9'2"     | 2.79m                   | 9'2"     | 2.79m                   | 9'2"      | 2.79m             | 9'2"      |
| <b>D</b> Platform Width                     | 1.6m                    | 5'3"     | 1.6m                    | 5'3"     | 1.6m                    | 5'3"      | 1.6m              | 5'3"      |
| <b>E</b> Overall Length (with ladder)       | 3.11m                   | 10'2"    | 3.76m                   | 12'4"    | 3.76m                   | 12'4"     | 3.73m             | 12'3"     |
| <b>F</b> Overall Width                      | 1.79m                   | 5'10"    | 1.79m                   | 5'10"    | 1.79m                   | 5'10"     | 1.84m             | 6'        |
| <b>G</b> Overall Height-Rails up            | 2.58m                   | 8'6"     | 2.55m                   | 8'4"     | 2.7m                    | 8'10"     | 2.9m              | 9'6"      |
| Overall Height-Rails down                   | 1.89m                   | 6'2"     | 1.89m                   | 6'2"     | 2.04m                   | 6'8"      | 2.24m             | 7'4"      |
| Extension Deck                              | 1.52m                   | 5'       | 1.52m                   | 5'       | 1.52m                   | 5'        | 1.5m              | 4'11"     |
| <b>H</b> Wheelbase                          | 2.29m                   | 8'       | 2.29m                   | 8'       | 2.29m                   | 8'        | 2.29m             | 8'        |
| Ground Clearance-Center                     | 0.23m                   | 9"       | 0.23m                   | 9"       | 0.23m                   | 9"        | 0.23m             | 9"        |
| <b>Productivity</b>                         |                         |          |                         |          |                         |           |                   |           |
| Max. Platform Occupancy                     | 4 (in) / 4 (out)        |          | 4 (in) / 2 (out)        |          | 3 (in) / 2 (out)        |           | 2 (in) / 2 (out)  |           |
| Platform Capacity                           | 680kg                   | 1499 lbs | 454kg                   | 1000 lbs | 365kg                   | 805 lbs   | 365kg             | 805 lbs   |
| Platform Capacity-Extension                 | 140kg                   | 310 lbs  | 140kg                   | 310 lbs  | 140kg                   | 310 lbs   | 140kg             | 309 lbs   |
| Drive Height                                | Full Height             |          | Full Height             |          | Full Height             |           | Full Height       |           |
| Gradeability-Stowed                         | 40%                     | 40%      | 35%                     | 35%      | 35%                     | 35%       | 35%               | 35%       |
| Turning Radius-Outside                      | 4.75m                   | 15'7"    | 4.75m                   | 15'7"    | 4.75m                   | 15'7"     | 4.75m             | 15'7"     |
| Raise/Lower Speed                           | 35s / 30s               |          | 39s / 46s               |          | 61s / 55s               |           | 80s / 60s         |           |
| Brakes                                      | Rear-wheel Brake        |          | Rear-wheel Brake        |          | Rear-wheel Brake        |           | Rear-wheel Brake  |           |
| Drive Mode                                  | 4x2                     |          | 4x2                     |          | 4x2                     |           | 4x2               |           |
| Tire Type                                   | Foam-filled Non-marking |          | Foam-filled Non-marking |          | Foam-filled Non-marking |           | Solid Non-marking |           |
| Tire Size                                   | 663x283mm               | 26"x11"  | 663x283mm               | 26"x11"  | 663x283mm               | 26"x11"   | 663x283mm         | 26"x11"   |
| <b>Power</b>                                |                         |          |                         |          |                         |           |                   |           |
| Power Source                                | 48V DC 315Ah            |          | 48V DC 315Ah            |          | 48V DC 315Ah            |           | 48V DC 390Ah      |           |
| <b>Hydraulic System</b>                     |                         |          |                         |          |                         |           |                   |           |
| Hydraulic Oil Volume                        | 50L                     | 13.21gal | 70L                     | 18.5gal  | 70L                     | 18.5gal   | 50L               | 13.2gal   |
| <b>Weight</b>                               |                         |          |                         |          |                         |           |                   |           |
| Machine Weight with Outriggers (CE/ANSI) *  | 4190kg                  | 9237 lbs | 4350kg                  | 9570 lbs | 5100kg                  | 11245 lbs | 6260kg            | 13800 lbs |
| Machine Weight without Outriggers (CE/ANSI) | 3720kg                  | 8201 lbs | /                       | /        | /                       | /         | /                 | /         |

\* Hydraulic outriggers are optional for SR0818E and SR0818D



- Larger work platform with high capacity offers great productivity.
- Powerful diesel engine, oscillating axles and four-wheel drive provide better performance on most rough terrain job sites.
- The overload system and motion alarm help the operator to complete the job in a much safer way.
- Pull-out engine tray for easy access and maintenance.
- On-board self-diagnosis system makes it easier for quick troubleshooting.

## SPECIFICATIONS

| MODELS                                      | SR0818D (SR2669D)          |          | SR1018D (SR3369D)          |          | SR1218D (SR4069D)          |           |
|---|----------------------------|----------|----------------------------|----------|----------------------------|-----------|
|   | Metric                     | Imperial | Metric                     | Imperial | Metric                     | Imperial  |
| Measurements                                |                            |          |                            |          |                            |           |
| Work Height Max.                            | 9.7m                       | 31'10"   | 11.7m                      | 38'5"    | 13.9m                      | 45'7"     |
| <b>A</b> Platform Height-Raised             | 7.7m                       | 25'3"    | 9.7m                       | 31'10"   | 11.9m                      | 39'1"     |
| <b>B</b> Platform Height-Stowed             | 1.41m                      | 4'8"     | 1.41m                      | 4'8"     | 1.56m                      | 5'1"      |
| <b>C</b> Platform Length                    | 2.79m                      | 9'2"     | 2.79m                      | 9'2"     | 2.79m                      | 9'2"      |
| <b>D</b> Platform Width                     | 1.6m                       | 5'3"     | 1.6m                       | 5'3"     | 1.6m                       | 5'3"      |
| <b>E</b> Overall Length (with ladder)       | 3.11m                      | 10'2"    | 3.76m                      | 12'4"    | 3.76m                      | 12'4"     |
| <b>F</b> Overall Width                      | 1.79m                      | 5'10"    | 1.79m                      | 5'10"    | 1.79m                      | 5'10"     |
| <b>G</b> Overall Height-Rails up            | 2.58m                      | 8'6"     | 2.55m                      | 8'4"     | 2.7m                       | 8'10"     |
| Overall Height-Rails down                   | 1.89m                      | 6'2"     | 1.89m                      | 6'2"     | 2.04m                      | 6'8"      |
| Extension Deck                              | 1.52m                      | 5'       | 1.52m                      | 5'       | 1.52m                      | 5'        |
| <b>H</b> Wheelbase                          | 2.29m                      | 7'6"     | 2.29m                      | 7'6"     | 2.29m                      | 7'6"      |
| Ground Clearance-Center                     | 0.23m                      | 9"       | 0.23m                      | 9"       | 0.23m                      | 9"        |
| Productivity                                |                            |          |                            |          |                            |           |
| Max. Platform Occupancy                     | 4 (in) / 4 (out)           |          | 4 (in) / 2 (out)           |          | 3 (in) / 2 (out)           |           |
| Platform Capacity                           | 680kg                      | 1499 lbs | 454kg                      | 1000 lbs | 365kg                      | 805 lbs   |
| Platform Capacity-Extension                 | 140kg                      | 310 lbs  | 140kg                      | 310 lbs  | 140kg                      | 310 lbs   |
| Drive Height                                | Full Height                |          | Full Height                |          | Full Height                |           |
| Gradeability-Stowed                         | 40%                        | 40%      | 35%                        | 35%      | 35%                        | 35%       |
| Turning Radius-Outside                      | 4.75m                      | 15'7"    | 4.75m                      | 15'7"    | 4.75m                      | 15'7"     |
| Raise/Lower Speed                           | 35s / 30s                  |          | 39s / 46s                  |          | 61s / 55s                  |           |
| Brakes                                      | Four-wheel Brake           |          | Four-wheel Brake           |          | Four-wheel Brake           |           |
| Drive Mode                                  | 4x4                        |          | 4x4                        |          | 4x4                        |           |
| Tire Type                                   | Foam-filled                |          | Foam-filled                |          | Foam-filled                |           |
| Tire Size                                   | 663x283mm                  | 26"x11"  | 663x283mm                  | 26"x11"  | 663x283mm                  | 26"x11"   |
| Power                                       |                            |          |                            |          |                            |           |
| Power Source                                | Kubota D1105 18.5kw/24.8hp |          | Kubota D1105 18.5kw/24.8hp |          | Kubota D1105 18.5kw/24.8hp |           |
| Fuel Tank Capacity                          | 53L                        | 14gal    | 53L                        | 14gal    | 53L                        | 14gal     |
| Hydraulic System                            |                            |          |                            |          |                            |           |
| Hydraulic Oil Volume                        | 50L                        | 13.21gal | 50L                        | 13.2gal  | 50L                        | 13.2gal   |
| Weight                                      |                            |          |                            |          |                            |           |
| Machine Weight with Outriggers (CE/ANSI) *  | 4170kg                     | 9193 lbs | 4330kg                     | 9545 lbs | 5080kg                     | 11200 lbs |
| Machine Weight without Outriggers (CE/ANSI) | 3700kg                     | 8157 lbs | /                          | /        | /                          | /         |

\* Hydraulic outriggers are optional for SR0818E and SR0818D

# SPECIFICATIONS

| MODELS                                | SR1023D (SR3390D)           |             | SR1323D (SR4390D)           |             | SR1623D (SR5390D)           |             |
|---------------------------------------|-----------------------------|-------------|-----------------------------|-------------|-----------------------------|-------------|
|                                       | Metric                      | Imperial    | Metric                      | Imperial    | Metric                      | Imperial    |
| Measurements                          |                             |             |                             |             |                             |             |
| Work Height Max.                      | 12m                         | 39'4"       | 15m                         | 49'3"       | 17.9m                       | 58'9"       |
| <b>A</b> Platform Height-Raised       | 10m                         | 32'10"      | 13m                         | 42'8"       | 15.9m                       | 52'2"       |
| <b>B</b> Platform Height-Stowed       | 1.58m                       | 5'2"        | 1.83m                       | 6'          | 2.08m                       | 6'10"       |
| <b>C</b> Platform Length              | 3.98/4.81m                  | 13'1"/15'9" | 3.98/4.81m                  | 13'1"/15'9" | 3.98/4.81m                  | 13'1"/15'9" |
| <b>D</b> Platform Width               | 1.83m                       | 6'          | 1.83m                       | 6'          | 1.83m                       | 6'          |
| <b>E</b> Overall Length (with ladder) | 4.9m                        | 16'1"       | 4.9m                        | 16'1"       | 4.9m                        | 16'1"       |
| <b>F</b> Overall Width                | 2.3m                        | 7'7"        | 2.3m                        | 7'7"        | 2.3m                        | 7'7"        |
| <b>G</b> Overall Height-Rails up      | 2.74m                       | 9'          | 2.96m                       | 9'9"        | 3.18m                       | 10'5"       |
| Overall Height-Rails down             | 2.06m                       | 6'9"        | 2.28m                       | 7'6"        | 2.5m                        | 8'2"        |
| Extension Deck                        | 1.45/1.14m                  | 4'9"/3'9"   | 1.45/1.14m                  | 4'9"/3'9"   | 1.45/1.14m                  | 4'9"/3'9"   |
| <b>H</b> Wheelbase                    | 2.85m                       | 9'4"        | 2.85m                       | 9'4"        | 2.85m                       | 9'4"        |
| Ground Clearance-Center               | 0.23m                       | 9"          | 0.23m                       | 9"          | 0.23m                       | 9"          |
| <b>Productivity</b>                   |                             |             |                             |             |                             |             |
| Max. Platform Occupancy               | 7 (in) / 7 (out)            |             | 7 (in) / 7 (out)            |             | 4 (in) / 4 (out)            |             |
| Platform Capacity                     | 1100kg                      | 2430 lbs    | 680kg                       | 1500 lbs    | 680kg                       | 1500 lbs    |
| Platform Capacity-Extension           | 230kg                       | 510 lbs     | 230kg                       | 510 lbs     | 230kg                       | 510 lbs     |
| Drive Height                          | Full Height                 |             | Full Height                 |             | 8.5m                        | 27'11"      |
| Gradeability-Stowed                   | 40%                         | 40%         | 40%                         | 40%         | 40%                         | 40%         |
| Turning Radius-Outside                | 5.33m                       | 17'6"       | 5.33m                       | 17'6"       | 5.33m                       | 17'6"       |
| Raise/Lower Speed                     | 45s / 45s                   |             | 55s / 55s                   |             | 55s / 55s                   |             |
| Brakes                                | Four-wheel Brake            |             | Four-wheel Brake            |             | Four-wheel Brake            |             |
| Drive Mode                            | 4x4                         |             | 4x4                         |             | 4x4                         |             |
| Tire Type                             | Solid                       |             | Solid                       |             | Solid                       |             |
| Tire Size                             | 835x290mm                   | 33"x11"     | 835x290mm                   | 33"x11"     | 835x290mm                   | 33"x11"     |
| <b>Power</b>                          |                             |             |                             |             |                             |             |
| Power Source                          | Deutz D2.9 L4 36.4kw/48.8hp |             | Deutz D2.9 L4 36.4kw/48.8hp |             | Deutz D2.9 L4 36.4kw/48.8hp |             |
| Fuel Tank Capacity                    | 110L                        | 30gal       | 110L                        | 30gal       | 110L                        | 30gal       |
| <b>Hydraulic System</b>               |                             |             |                             |             |                             |             |
| Hydraulic Oil Volume                  | 140L                        | 37gal       | 140L                        | 37gal       | 140L                        | 37gal       |
| <b>Weight</b>                         |                             |             |                             |             |                             |             |
| Machine Weight (7.4m platform, CE)    | 6980kg                      | 15400 lbs   | 7460kg                      | 16450 lbs   | 8200kg                      | 18080 lbs   |
| Machine Weight (6.58m platform, ANSI) | 6880kg                      | 15170 lbs   | 7360kg                      | 16230 lbs   | 8100kg                      | 17860 lbs   |

## STANDARD FEATURES

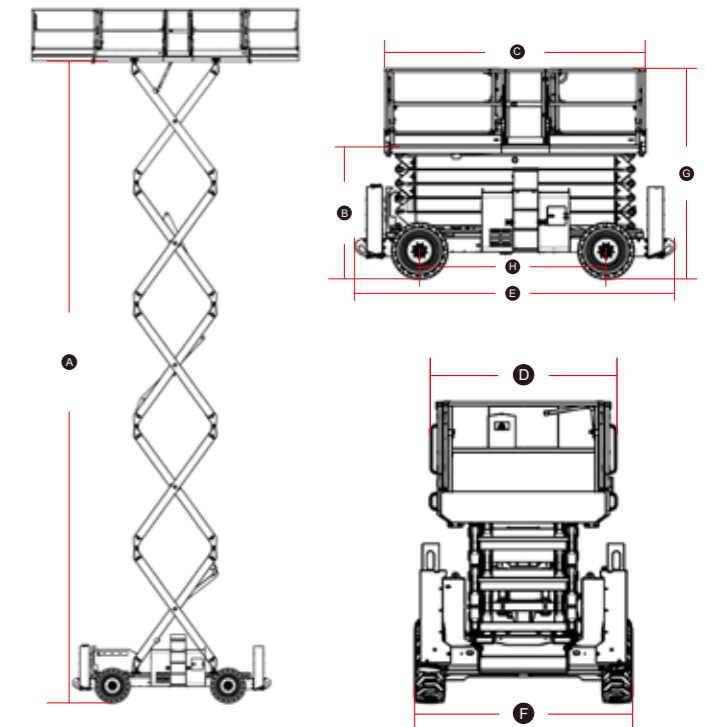
- Proportional control
- Descent alarm with flashing beacon
- Emergency stop button
- Tilt alarm with lift cut-out
- Self-lock entry gate
- On-board diagnostic system
- Emergency descent
- Oscillating axle
- Overload sensing system
- Auto-leveling outriggers
- Horn

## OPTIONAL

- AC power to platform
- Telematics
- Hydraulic generator
- Pipe racks (Only for SR1323D / SR1623D)
- Solid non-marking tires
- Foam-filled non-marking tires
- Foam-filled tires
- Solid tires

\* The features are for electric and diesel RT scissor lifts.

## MACHINE SIZE



LGMG Telehandlers are the perfect choice for construction work. They are sturdy yet manoeuvrable, with excellent performance and strong four-wheel drive capabilities. The three steering modes and frame leveling function make the LGMG Telehandlers the perfect machine to tackle complex or difficult working conditions.

## FEATURES

### High Power, Low Fuel Consumption

- Featured with high powerful Perkins engine for maximizing material handling capacity with lower consumption.

### High Ergonomics, Safety and Comfort

- FOPS&ROPS cab as standard brings the highly effective safety on job sites.
- The standard high-capacity air conditioning system with heater creates a comfortable and productive operator environment, which is ideal for work sites in hotter or cooler climates.
- Standard-fit LGMG fenders provide superior protection from dirt and spray.
- Excellent all-around visibility thanks to direct glazing, large roof screen and low engine house.

### Precise Operation, Intelligent Controlling

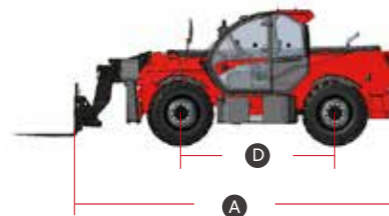
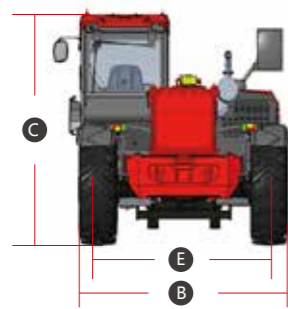
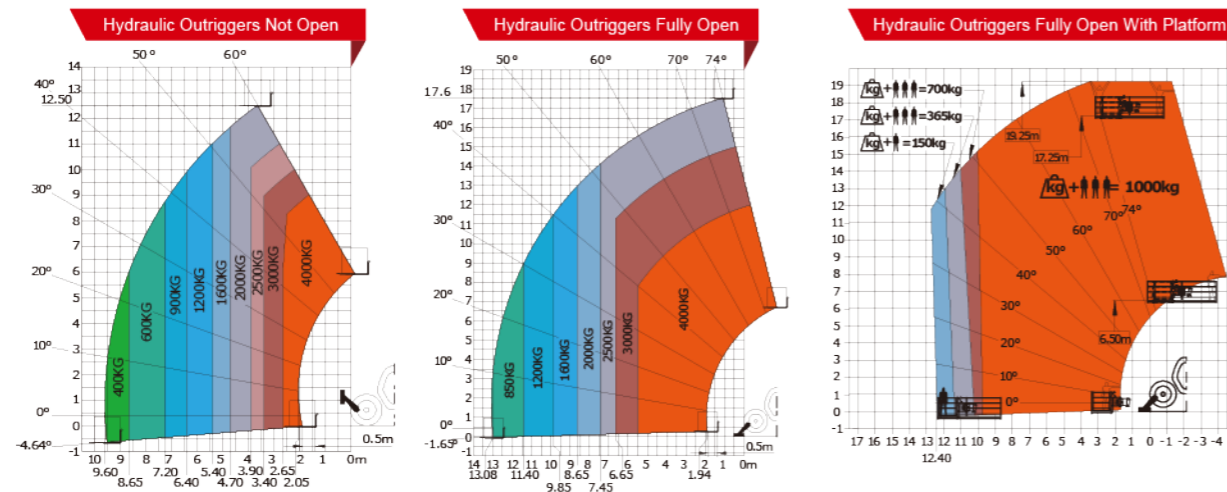
- The load-sense control system delivers high efficiency and excellent performance on different job sites.
- A large high-definition LCD screen, featuring an automotive-style and intuitive layout, provides a clear view and is easy to be recognized.
- An ergonomically-designed, fully proportional single-lever joystick delivers fast and precise control.

### Versatile and Adaptable

- The three steering modes: front-wheel steering, crab-steering, and in-situ steering, with a small turning radius, make the machine perfect for constrained or restricted job sites.
- Auxiliary spools are fitted as standard, to accommodate a wide range of attachments, including platform, bucket, frame-mounted hook and glass suction, for maximum versatility.
- The LGMG HR2150 Telehandler can rotate with 360 degree to expand the working scope.



## LOAD CURVE OF H1840 UNDER RT CONDITION



## SPECIFICATIONS

| Models                              | H735                           | H1440                          | H1840                          | HR2150                         |
|-------------------------------------|--------------------------------|--------------------------------|--------------------------------|--------------------------------|
| Measurements                        | Metric                         | Metric                         | Metric                         | Metric                         |
| Max. Capacity                       | 3500kg                         | 4000kg                         | 4000kg                         | 4999kg                         |
| Overall Weight                      | 7000kg                         | 12050kg                        | 12350kg                        | 17100kg                        |
| Max. Lifting Height                 | 6.9m                           | 13.6m                          | 17.6m                          | 20.7m                          |
| Max. Outreach                       | 3.9m                           | 9.22m                          | 13.1m                          | 18.1m                          |
| Min. Turning Radius                 | 3.9m                           | 4.2m                           | 4.2m                           | 3.65m                          |
| Gradeability-Unladen                | 45%                            | 65%                            | 65%                            | 50%                            |
| Tilt Angle                          | /                              | ±9°                            | ±9°                            | ±8°                            |
| Max. Braking Distance-Unladen       | ≤3m (20km/h)                   | ≤5.5m (20km/h)                 | ≤5.5m (20km/h)                 | ≤3m (20km/h)                   |
| Primary Boom Ascending Time         | 5-15s                          | 7.5-17.5s                      | 11-17.5s                       | 27s                            |
| Primary Boom Descending Time        | 5-15s                          | 13.5-23.5s                     | 16-23.5s                       | 22s                            |
| Drive /Steering Mode                | 4 Wheel Drive<br>4 Wheel Steer | 4 Wheel Drive<br>4 Wheel Steer | 4 Wheel Drive<br>4 Wheel Steer | 4 Wheel Drive<br>4 Wheel Steer |
| Forward - First Gear Travel Speed   | 5km/h                          | 5km/h                          | 5km/h                          | 5km/h                          |
| Forward - Second Gear Travel Speed  | 29km/h                         | 12km/h                         | 12km/h                         | 30km/h                         |
| Forward - Third Gear Travel Speed   | /                              | 20km/h                         | 20km/h                         | /                              |
| Forward - Fourth Gear Travel Speed  | /                              | 30km/h                         | 30km/h                         | /                              |
| Backward - First Gear Travel Speed  | 5km/h                          | 5km/h                          | 5km/h                          | 5km/h                          |
| Backward - Second Gear Travel Speed | 29km/h                         | 12km/h                         | 12km/h                         | 30km/h                         |
| Backward - Third Gear Travel Speed  | /                              | 20km/h                         | 20km/h                         | /                              |
| Boom Extending Time                 | 5-15s                          | 12.5-22.5s                     | 15-22.5s                       | 32s                            |
| Boom Retracting Time                | 5-15s                          | 8-18s                          | 11-18s                         | 23s                            |
| <b>Dimensions</b>                   |                                |                                |                                |                                |
| A Overall Length                    | 5.23m                          | 6.08m                          | 6.28m                          | 6.87m                          |
| B Overall Width                     | 2.33m                          | 2.44m                          | 2.44m                          | 2.47m                          |
| C Overall Height                    | 2.38m                          | 2.68m                          | 2.68m                          | 3.16m                          |
| D Wheelbase                         | 2.85m                          | 3.07m                          | 3.07m                          | 2.75m                          |
| E Wheel Track                       | 1.93m                          | 1.96m                          | 1.96m                          | 2m                             |
| F Max. Lifting Height               | 6.9m                           | 13.6m                          | 17.6m                          | 20.7m                          |
| Ground Clearance                    | 0.42m                          | 0.41m                          | 0.41m                          | 0.39m                          |
| Standard Tyres                      | 400/80R24                      | 440/80R24                      | 440/80R24                      | 445/70R 22.5                   |
| <b>Engine</b>                       |                                |                                |                                |                                |
| Manufacturer                        | Kubota                         | Perkins                        | Perkins                        | Perkins                        |
| Rated Power                         | 54.6kw                         | 74.5kw                         | 74.5kw                         | 106kw                          |
| Max. Power                          | 54.6kw                         | 74.5kw                         | 74.5kw                         | 106kw                          |
| Max. Torque                         | 261.1N.m                       | 420N.m                         | 420N.m                         | 558N.m                         |
| Displacement                        | 3331ml                         | 4400ml                         | 4400ml                         | 4400ml                         |
| <b>Tank Capacities</b>              |                                |                                |                                |                                |
| Hydraulic Oil Capacity              | 75L                            | 180L                           | 180L                           | 260L                           |
| Fuel Tank Capacity                  | 100L                           | 150L                           | 150L                           | 170L                           |



# SCISSOR LIFT RANGE (SS SERIES)

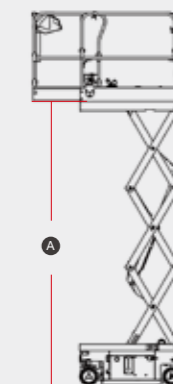
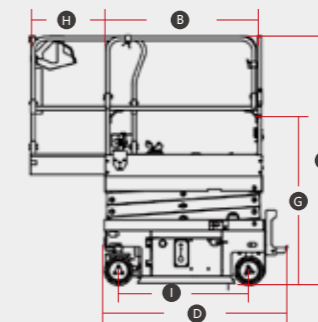


LGMG's micro scissors are ideal solutions for the low-level access and space restricted application job sites. Shorten overall machine length, lighter weight and compact design make the machine suitable for most elevators.

- Battery powered, zero emission, and quiet drive make the machine environmentally friendly.
- Efficient electric drive system provides longer-lasting performance and better gradeability.
- Exceptional waterproofed drive system design provides excellent performance in wet conditions.

## SPECIFICATIONS

| MODELS                             | SS0407ER (SS1230ER)             |          | SS0507E (SS1432E) |          | SS0607E (SS1932E) |          |
|------------------------------------|---------------------------------|----------|-------------------|----------|-------------------|----------|
| Measurements                       | Metric                          | Imperial | Metric            | Imperial | Metric            | Imperial |
| Work Height Max.                   | 5.6m                            | 18'5"    | 6.3m              | 20'8"    | 7.5m              | 24'7"    |
| <b>A</b> Platform Height-Raised    | 3.6m                            | 11'10"   | 4.3m              | 14'1"    | 5.5m              | 18'      |
| <b>B</b> Platform Length           | 1.27m                           | 4'2"     | 1.35m             | 4'5"     | 1.35m             | 4'5"     |
| <b>C</b> Platform Width            | 0.7m                            | 2'4"     | 0.7m              | 2'4"     | 0.7m              | 2'4"     |
| <b>D</b> Overall Length            | 1.47m                           | 4'10"    | 1.53m             | 5'       | 1.53m             | 5'       |
| <b>E</b> Overall Width             | 0.76m                           | 2'6"     | 0.81m             | 2'8"     | 0.81m             | 2'8"     |
| <b>F</b> Overall Height-Rails Up   | 2m                              | 6'7"     | 2.15m             | 7'1"     | 2.28m             | 7'6"     |
| <b>G</b> Overall Height-Rails Down | 1.57m                           | 5'2"     | 1.76m             | 5'9"     | 1.86m             | 6'1"     |
| <b>H</b> Extension Deck            | 0.6m                            | 2'       | 0.6m              | 2'       | 0.6m              | 2'       |
| <b>I</b> Wheelbase                 | 1.05m                           | 3'5"     | 1.12m             | 3'8"     | 1.12m             | 3'8"     |
| Ground Clearance (Stowed/Raised)   | 50/20mm                         | 2"/0.8"  | 50/16mm           | 2"/0.6"  | 50/16mm           | 2"/0.6"  |
| <b>PRODUCTIVITY</b>                |                                 |          |                   |          |                   |          |
| Max. Platform Occupancy (In/Out)   | 2 / 1                           | 2 / 1    | 2 / 1             | 2 / 0    | 2 / 0             | 2 / 0    |
| Platform Capacity                  | 240kg                           | 530 lbs  | 230kg             | 510 lbs  | 230kg             | 510 lbs  |
| Platform Capacity-Extension        | 100kg                           | 221 lbs  | 113kg             | 265 lbs  | 113kg             | 265 lbs  |
| Drive Height                       | Full Height                     |          | Full Height       |          | Full Height       |          |
| Gradeability-Stowed                | 25%                             |          | 25%               |          | 25%               |          |
| Turning Radius-Outside             | 1.5m                            | 4'11"    | 1.5m              | 4'11"    | 1.5m              | 4'11"    |
| Raise/Lower Speed                  | 25s / 18s                       |          | 25s / 20s         |          | 32s / 27s         |          |
| Brakes                             | Rear-wheel Brake                |          | Front-wheel Brake |          | Front-wheel Brake |          |
| Drive Mode                         | 4x2                             |          | 4x2               |          | 4x2               |          |
| Tire Type                          | Solid Non-marking               |          | Solid Non-marking |          | Solid Non-marking |          |
| Tire Size                          | 230x80mm                        | 9"x3"    | 230x80mm          | 9"x3"    | 230x80mm          | 9"x3"    |
| <b>POWER</b>                       |                                 |          |                   |          |                   |          |
| Power Source                       | 24V DC 100Ah (Maintenance free) |          | 24V DC 150Ah      |          | 24V DC 150Ah      |          |
| <b>HYDRAULIC SYSTEM</b>            |                                 |          |                   |          |                   |          |
| Hydraulic Oil Capacity             | 4L                              | 1gal     | 4.5L              | 1gal     | 4.5L              | 1gal     |
| <b>WEIGHT</b>                      |                                 |          |                   |          |                   |          |
| Machine Weight (CE/ANSI)           | 880kg                           | 1940 lbs | 985kg             | 2172 lbs | 1300kg            | 2866 lbs |





Entire range designed for indoor and outdoor use

- The second-generation scissor lifts are all indoor-outdoor models, allowing two people to work on the platform indoors and one person outdoors, which is more aligned with customer requirements and improves efficiency on work sites.



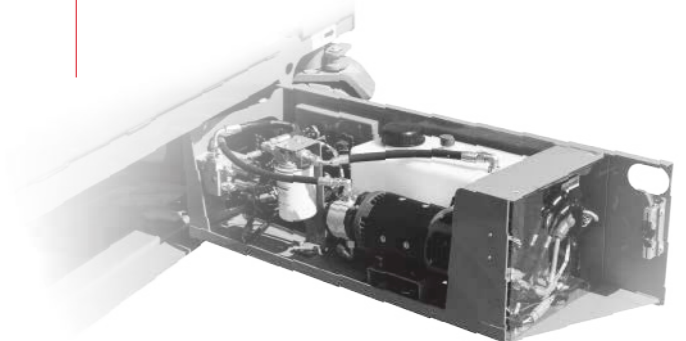
Large lower control panel

- The lower control panel utilizes a large display which makes troubleshooting easier and more convenient. Multi-level menu design, multi-language support, and Bluetooth modules are available as optional.



More convenient to maintain

- Optimized design of internal components for a more rational arrangement and easier maintenance.



Universal key components

- The key components of the second-generation models such as joysticks, drive motors, motor controllers, and chargers are highly interchangeable with existing models on the market, making it easy to replace them quickly and efficiently, to save costs for daily operation and maintenance.



Optional lithium battery for the entire product range

- The full range of second-generation scissor lifts is available with optional lithium batteries, 100% maintenance-free, fast-charging, long-life, and full-power.



## ELECTRIC MOTOR DRIVE SCISSOR LIFT

| MODELS                                  | S0607EII (S1932EII) |           | S0608EII         | S0808EII (S2632EII)  |                           |
|---|---------------------|-----------|------------------|----------------------|---------------------------|
| Measurements                            | Metric              | Imperial  | Metric           | Metric               | Imperial                  |
| Work Height Max.                        | 7.8m                | 25'7"     | 7.9m             | 9.8/8m<br>(in / out) | 32'2"/26'3"<br>(in / out) |
| <b>A</b> Platform Height-Raised         | 5.8m                | 19'       | 5.9m             | 7.8/6m<br>(in / out) | 25'7"/19'8"<br>(in / out) |
| <b>B</b> Platform Length                | 1.64m               | 5'5"      | 2.26m            | 2.26m                | 7'5"                      |
| <b>C</b> Platform Width                 | 0.73m               | 2'5"      | 0.79m            | 0.79m                | 2'7"                      |
| <b>D</b> Overall Length                 | 1.83m               | 6'        | 2.44m            | 2.44m                | 8'                        |
| <b>E</b> Overall Width                  | 0.79m               | 2'7"      | 0.83m            | 0.83m                | 2'9"                      |
| <b>F</b> Overall Height-Guardrails Up   | 2.16m               | 7'1"      | 2.15m            | 2.28m                | 7'6"                      |
| <b>G</b> Overall Height-Guardrails Down | 1.81m               | 5'11"     | 1.79m            | 1.9m                 | 6'3"                      |
| <b>H</b> Extension Deck                 | 0.9m                | 2'11"     | 0.9m             | 0.9m                 | 2'11"                     |
| <b>I</b> Wheelbase                      | 1.35m               | 4'5"      | 1.85m            | 1.85m                | 6'1"                      |
| Ground Clearance (Stowed/Raised)        | 78/26mm             | 3"/1"     | 100/20mm         | 100/20mm             | 4"/1"                     |
| PRODUCTIVITY                            |                     |           |                  |                      |                           |
| Max. Platform Occupancy                 | 2 (in) / 1 (out)    |           | 2 (in) / 1 (out) | 2 (in) / 1 (out)     |                           |
| Platform Capacity                       | 230kg               | 510 lbs   | 380kg            | 230kg                | 510 lbs                   |
| Platform Capacity-Extension Deck        | 120kg               | 265 lbs   | 120kg            | 120kg                | 265 lbs                   |
| Drive Height                            | Full Height         |           |                  |                      |                           |
| Gradeability-Stowed                     | 25%                 | 25%       | 25%              | 25%                  | 25%                       |
| Min. Turning Radius                     | 1.8m                | 5'11"     | 2.2m             | 2.2m                 | 7'3"                      |
| Raise/Lower Speed                       | 16s / 28s           | 16s / 28s | 30s / 34s        | 31s / 40s            | 31s / 40s                 |
| Brakes                                  | Front-wheel Brake   |           |                  |                      |                           |
| Drive Mode                              | 4x2                 | 4x2       | 4x2              | 4x2                  | 4x2                       |
| Tire Type                               | Solid Non-marking   |           |                  |                      |                           |
| Tire Size                               | 323x100mm           | 12"x4"    | 380x130mm        | 380x130mm            | 15"x5"                    |
| POWER                                   |                     |           |                  |                      |                           |
| Power Source                            | 24V 225Ah           |           | 24V 225Ah        | 24V 225Ah            |                           |
| HYDRAULIC SYSTEM                        |                     |           |                  |                      |                           |
| Hydraulic Oil Capacity                  | 5L                  | 1.3gal    | 13L              | 13L                  | 3.4gal                    |
| WEIGHT                                  |                     |           |                  |                      |                           |
| Machine Weight (CE/ANSI)                | 1610kg              | 3549 lbs  | 2040kg           | 2200kg               | 4850 lbs                  |

## ELECTRIC MOTOR DRIVE SCISSOR LIFT

| MODELS                                  | S0812EII (S2646EII) |          | S1012EII (S3246EII) |          | S1212EII (S4046EII)   |                            | S1413EII (S4650EII)    |                            |
|---|---------------------|----------|---------------------|----------|-----------------------|----------------------------|------------------------|----------------------------|
| Measurements                            | Metric              | Imperial | Metric              | Imperial | Metric                | Imperial                   | Metric                 | Imperial                   |
| Work Height Max.                        | 10m                 | 32'10"   | 12m                 | 39'4"    | 14/9.5m<br>(in / out) | 45'11"/31'2"<br>(in / out) | 15.8/10m<br>(in / out) | 51'10"/32'9"<br>(in / out) |
| <b>A</b> Platform Height-Raised         | 8m                  | 26'3"    | 10m                 | 32'10"   | 12/7.5m<br>(in / out) | 39'4"/24'7"<br>(in / out)  | 13.8/8m<br>(in / out)  | 45'3"/26'3"<br>(in / out)  |
| <b>B</b> Platform Length                | 2.26m               | 7'5"     | 2.26m               | 7'5"     | 2.26m                 | 7'5"                       | 2.64m                  | 8'8"                       |
| <b>C</b> Platform Width                 | 1.12m               | 3'8"     | 1.12m               | 3'8"     | 1.12m                 | 3'8"                       | 1.12m                  | 3'8"                       |
| <b>D</b> Overall Length                 | 2.49m               | 8'2"     | 2.49m               | 8'2"     | 2.49m                 | 8'2"                       | 2.8m                   | 9'2"                       |
| <b>E</b> Overall Width                  | 1.18m               | 3'10"    | 1.18m               | 3'10"    | 1.18m                 | 3'10"                      | 1.3m                   | 4'3"                       |
| <b>F</b> Overall Height-Guardrails Up   | 2.36m               | 7'9"     | 2.49m               | 8'2"     | 2.63m                 | 8'8"                       | 2.74m                  | 9'                         |
| <b>G</b> Overall Height-Guardrails Down | 1.55m               | 5'1"     | 1.68m               | 5'6"     | 1.8m                  | 5'11"                      | 1.94m                  | 6'4"                       |
| <b>H</b> Extension Deck                 | 0.9m                | 2'11"    | 0.9m                | 2'11"    | 0.9m                  | 2'11"                      | 0.9m                   | 2'11"                      |
| <b>I</b> Wheelbase                      | 1.85m               | 6'1"     | 1.85m               | 6'1"     | 1.85m                 | 6'1"                       | 2.22m                  | 7'3"                       |
| Ground Clearance (Stowed/Raised)        | 100/20mm            | 4"/1"    | 100/20mm            | 4"/1"    | 100/20mm              | 4"/1"                      | 105/20mm               | 4"/1"                      |
| PRODUCTIVITY                            |                     |          |                     |          |                       |                            |                        |                            |
| Max. Platform Occupancy                 | 2 (in) / 1 (out)    |          | 2 (in) / 1 (out)    |          | 2 (in) / 1 (out)      |                            | 2 (in) / 1 (out)       |                            |
| Platform Capacity                       | 450kg               | 990 lbs  | 320kg               | 705 lbs  | 320kg                 | 705 lbs                    | 320kg                  | 705 lbs                    |
| Platform Capacity-Extension Deck        | 120kg               | 265 lbs  | 120kg               | 265 lbs  | 120kg                 | 265 lbs                    | 120kg                  | 265 lbs                    |
| Drive Height                            | Full Height         |          |                     |          |                       |                            |                        |                            |
| Gradeability-Stowed                     | 25%                 |          | 25%                 |          | 25%                   |                            | 25%                    |                            |
| Min. Turning Radius                     | 2.45m               | 8'       | 2.45m               | 8'       | 2.45m                 | 8'                         | 2.85m                  | 9'4"                       |
| Raise/Lower Speed                       | 35s / 40s           |          | 58s / 48s           |          | 65s / 60s             |                            | 80s / 65s              |                            |
| Brakes                                  | Front-wheel Brake   |          |                     |          |                       |                            |                        |                            |
| Drive Mode                              | 4x2                 |          | 4x2                 |          | 4x2                   |                            | 4x2                    |                            |
| Tire Type                               | Solid Non-marking   |          |                     |          |                       |                            |                        |                            |
| Tire Size                               | 380x130mm           | 15"x5"   | 380x130mm           | 15"x5"   | 380x130mm             | 15"x5"                     | 380x130mm              | 15"x5"                     |
| POWER                                   |                     |          |                     |          |                       |                            |                        |                            |
| Power Source                            | 24V DC 240Ah        |          | 24V DC 240Ah        |          | 24V DC 300Ah          |                            | 24V DC 300Ah           |                            |
| HYDRAULIC SYSTEM                        |                     |          |                     |          |                       |                            |                        |                            |
| Hydraulic Oil Capacity                  | 16L                 | 4.2gal   | 23L                 | 6.1gal   | 23L                   | 6.1gal                     | 25.5L                  | 6.7gal                     |
| WEIGHT                                  |                     |          |                     |          |                       |                            |                        |                            |
| Machine Weight (CE/ANSI)                | 2318kg              | 5110 lbs | 2995kg              | 6603 lbs | 2970kg                | 6548 lbs                   | 3500kg                 | 7716 lbs                   |



**HYDRAULIC MOTOR DRIVE SCISSOR LIFT**

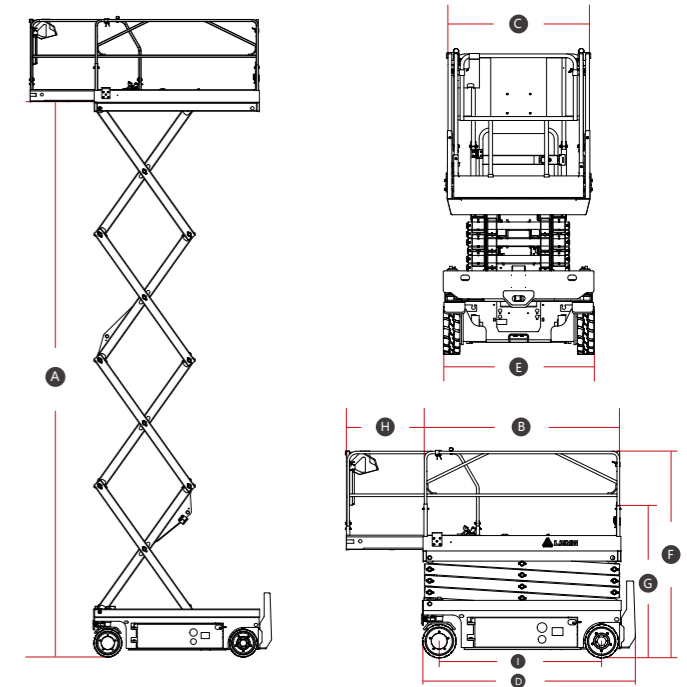
| MODELS                           | S0607II (S1932II) |           | S0608II          | S0808II (S2632II)    |                           |
|----------------------------------|-------------------|-----------|------------------|----------------------|---------------------------|
| Measurements                     | Metric            | Imperial  | Metric           | Metric               | Imperial                  |
| Work Height Max.                 | 7.8m              | 25'7"     | 7.9m             | 9.8/8m<br>(in / out) | 32'2"/26'3"<br>(in / out) |
| A Platform Height-Raised         | 5.8m              | 19'       | 5.9m             | 7.8/6m<br>(in / out) | 25'7"/19'8"<br>(in / out) |
| B Platform Length                | 1.64m             | 5'5"      | 2.26m            | 2.26m                | 7'5"                      |
| C Platform Width                 | 0.73m             | 2'5"      | 0.79m            | 0.79m                | 2'7"                      |
| D Overall Length                 | 1.83m             | 6'        | 2.44m            | 2.44m                | 8'                        |
| E Overall Width                  | 0.79m             | 2'7"      | 0.83m            | 0.83m                | 2'9"                      |
| F Overall Height-Guardrails Up   | 2.16m             | 7'1"      | 2.15m            | 2.28m                | 7'6"                      |
| G Overall Height-Guardrails Down | 1.81m             | 5'11"     | 1.79m            | 1.9m                 | 6'3"                      |
| H Extension Deck                 | 0.9m              | 2'11"     | 0.9m             | 0.9m                 | 2'11"                     |
| I Wheelbase                      | 1.35m             | 4'5"      | 1.85m            | 1.85m                | 6'1"                      |
| Ground Clearance (Stowed/Raised) | 78/26mm           | 3"/1"     | 100/20mm         | 100/20mm             | 4"/1"                     |
| <b>PRODUCTIVITY</b>              |                   |           |                  |                      |                           |
| Max. Platform Occupancy          | 2 (in) / 1 (out)  |           | 2 (in) / 1 (out) | 2 (in) / 1 (out)     |                           |
| Platform Capacity                | 230kg             | 510 lbs   | 380kg            | 230kg                | 510 lbs                   |
| Platform Capacity-Extension Deck | 120kg             | 265 lbs   | 120kg            | 120kg                | 265 lbs                   |
| Drive Height                     | Full Height       |           |                  |                      |                           |
| Gradeability-Stowed              | 25%               | 25%       | 25%              | 25%                  | 25%                       |
| Min. Turning Radius              | 1.7m              | 5'7"      | 2.2m             | 2.2m                 | 7'3"                      |
| Raise/Lower Speed                | 16s / 28s         | 16s / 28s | 30s / 34s        | 31s / 40s            | 31s / 40s                 |
| Brakes                           | Rear-wheel Brake  |           |                  |                      |                           |
| Drive Mode                       | 4x2               | 4x2       | 4x2              | 4x2                  | 4x2                       |
| Tire Type                        | Solid Non-marking |           |                  |                      |                           |
| Tire Size                        | 323x100mm         | 12"x4"    | 380x130mm        | 380x130mm            | 15"x5"                    |
| <b>POWER</b>                     |                   |           |                  |                      |                           |
| Power Source                     | 24V 225Ah         |           | 24V 225Ah        | 24V 225Ah            |                           |
| <b>HYDRAULIC SYSTEM</b>          |                   |           |                  |                      |                           |
| Hydraulic Oil Capacity           | 9.5L              | 2.1gal    | 13L              | 13L                  | 3.4gal                    |
| <b>WEIGHT</b>                    |                   |           |                  |                      |                           |
| Machine Weight (CE/ANSI)         | 1610kg            | 3549 lbs  | 2040kg           | 2200kg               | 4850 lbs                  |

## HYDRAULIC MOTOR DRIVE SCISSOR LIFT

| MODELS                                  | S0812II (S2646II) |          | S1012II (S3246II) |          | S1212II (S4046II)     |                            | S1413II (S4650II)      |                            |
|---|-------------------|----------|-------------------|----------|-----------------------|----------------------------|------------------------|----------------------------|
| Measurements                            | Metric            | Imperial | Metric            | Imperial | Metric                | Imperial                   | Metric                 | Imperial                   |
| Work Height Max.                        | 10m               | 32'10"   | 12m               | 39'4"    | 14/9.5m<br>(in / out) | 45'11"/31'2"<br>(in / out) | 15.8/10m<br>(in / out) | 51'10"/32'9"<br>(in / out) |
| <b>A</b> Platform Height-Raised         | 8m                | 26'3"    | 10m               | 32'10"   | 12/7.5m<br>(in / out) | 39'4"/24'7"<br>(in / out)  | 13.8/8m<br>(in / out)  | 45'3"/26'3"<br>(in / out)  |
| <b>B</b> Platform Length                | 2.26m             | 7'5"     | 2.26m             | 7'5"     | 2.26m                 | 7'5"                       | 2.64m                  | 8'8"                       |
| <b>C</b> Platform Width                 | 1.12m             | 3'8"     | 1.12m             | 3'8"     | 1.12m                 | 3'8"                       | 1.12m                  | 3'8"                       |
| <b>D</b> Overall Length                 | 2.49m             | 8'2"     | 2.49m             | 8'2"     | 2.49m                 | 8'2"                       | 2.8m                   | 9'2"                       |
| <b>E</b> Overall Width                  | 1.18m             | 3'10"    | 1.18m             | 3'10"    | 1.18m                 | 3'10"                      | 1.3m                   | 4'3"                       |
| <b>F</b> Overall Height-Guardrails Up   | 2.36m             | 7'9"     | 2.49m             | 8'2"     | 2.63m                 | 8'8"                       | 2.74m                  | 9'                         |
| <b>G</b> Overall Height-Guardrails Down | 1.68m             | 5'6"     | 1.71m             | 5'7"     | 1.84m                 | 6'                         | 1.94m                  | 6'4"                       |
| <b>H</b> Extension Deck                 | 0.9m              | 2'11"    | 0.9m              | 2'11"    | 0.9m                  | 2'11"                      | 0.9m                   | 2'11"                      |
| <b>I</b> Wheelbase                      | 1.85m             | 6'1"     | 1.85m             | 6'1"     | 1.85m                 | 6'1"                       | 2.22m                  | 7'3"                       |
| Ground Clearance (Stowed/Raised)        | 100/20mm          | 4"/1"    | 100/20mm          | 4"/1"    | 100/20mm              | 4"/1"                      | 105/20mm               | 4"/1"                      |
| <b>PRODUCTIVITY</b>                     |                   |          |                   |          |                       |                            |                        |                            |
| Max. Platform Occupancy                 | 2 (in) / 1 (out)  |          | 2 (in) / 1 (out)  |          | 2 (in) / 1 (out)      |                            | 2 (in) / 1 (out)       |                            |
| Platform Capacity                       | 450kg             | 990 lbs  | 320kg             | 705 lbs  | 320kg                 | 705 lbs                    | 320kg                  | 705 lbs                    |
| Platform Capacity-Extension Deck        | 120kg             | 265 lbs  | 120kg             | 265 lbs  | 120kg                 | 265 lbs                    | 120kg                  | 265 lbs                    |
| Drive Height                            | Full Height       |          |                   |          |                       |                            |                        |                            |
| Gradeability-Stowed                     | 25%               |          | 25%               |          | 25%                   |                            | 25%                    |                            |
| Min. Turning Radius                     | 2.45m             | 8'       | 2.45m             | 8'       | 2.45m                 | 8'                         | 2.85m                  | 9'4"                       |
| Raise/Lower Speed                       | 35s / 40s         |          | 58s / 48s         |          | 65s / 60s             |                            | 80s / 65s              |                            |
| Brakes                                  | Rear-wheel Brake  |          |                   |          |                       |                            |                        |                            |
| Drive Mode                              | 4x2               |          | 4x2               |          | 4x2                   |                            | 4x2                    |                            |
| Tire Type                               | Solid Non-marking |          |                   |          |                       |                            |                        |                            |
| Tire Size                               | 380x130mm         | 15"x5"   | 380x130mm         | 15"x5"   | 380x130mm             | 15"x5"                     | 380x130mm              | 15"x5"                     |
| <b>POWER</b>                            |                   |          |                   |          |                       |                            |                        |                            |
| Power Source                            | 24V DC 240Ah      |          | 24V DC 240Ah      |          | 24V DC 300Ah          |                            | 24V DC 300Ah           |                            |
| <b>HYDRAULIC SYSTEM</b>                 |                   |          |                   |          |                       |                            |                        |                            |
| Hydraulic Oil Capacity                  | 16L               | 4.2gal   | 23L               | 6.1gal   | 23L                   | 6.1gal                     | 25.5L                  | 6.7gal                     |
| <b>WEIGHT</b>                           |                   |          |                   |          |                       |                            |                        |                            |
| Machine Weight (CE/ANSI)                | 2395kg            | 5280 lbs | 2995kg            | 6603 lbs | 2970kg                | 6548 lbs                   | 3500kg                 | 7716 lbs                   |

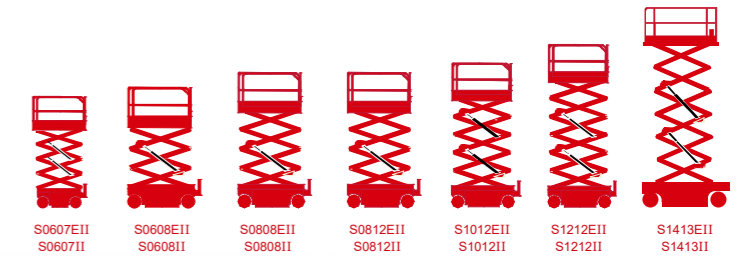
### STANDARD FEATURES

- Indoor and outdoor rated
- Proportional control
- Foldable guardrail
- Emergency stop device
- Manual brake release
- Emergency descent
- Swing-out component tray
- Pothole guard
- Self-lock entry gate
- Tilt alarm with lift cut-out
- Overload sensing system
- Descent alarm with flashing beacon
- All motions alarm
- Full-height drive
- Intelligent diagnostic system



### OPTIONAL

- AC power to platform
- Anti-collision protection
- Leak containment tray
- Maintenance-free battery
- Lithium battery
- Voice alarm system
- Telematics



# M0810JE / M0407TE

## VERTICAL MAST LIFT



### M0407TE

The M0407TE can be easily transported through doorways and passenger elevators. Small inner turning radius and full-height drive allow for flexible use in narrow spaces. It is also equipped with high-quality boom, intelligent self-diagnosis system, three-stage integrated rotatable telescopic oil cylinder, etc., which are safe, reliable and durable.

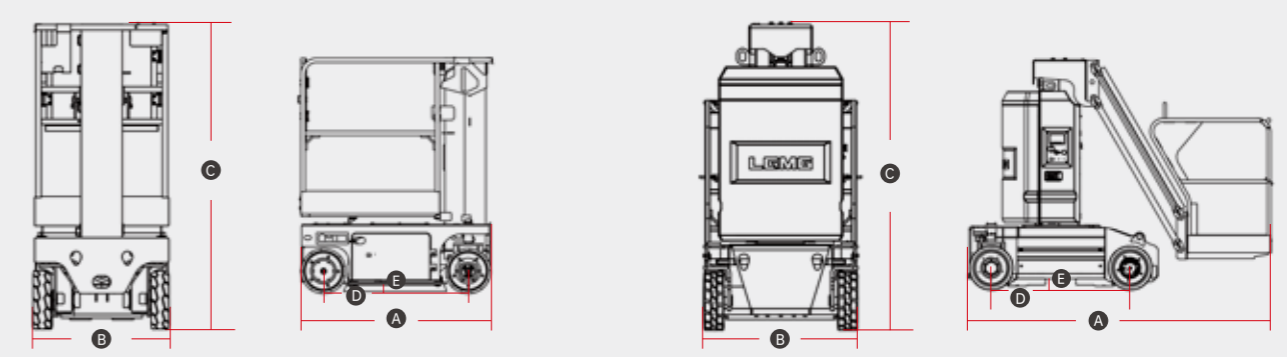
### M0810JE

The M0810JE has excellent manoeuvrability and is easy to manoeuvre in tight spaces. The 3.2m jib allows for a larger working range. Featuring zero-emission, environmentally friendly electric drive for longer working hours and higher efficiency, the whole vehicle is small in size, light in weight and easy to transport.

## SPECIFICATIONS

| MODELS                            | M0407TE (M1230TE)  |          |
|-----------------------------------|--------------------|----------|
| Measurements                      | Metric             | Imperial |
| Working Height Max.               | 5.7m               | 18'8"    |
| Platform Height                   | 3.7m               | 12'2"    |
| Platform Size                     | 1.33x0.75m         | 52"x30"  |
| <b>A</b> Overall Length           | 1.39m              | 4'7"     |
| <b>B</b> Overall Width            | 0.76m              | 2'6"     |
| <b>C</b> Overall Height (Stowed)  | 1.69m              | 5'6"     |
| <b>D</b> Wheelbase                | 1.04m              | 3'5"     |
| <b>E</b> Ground Clearance(Stowed) | 72mm               | 3"       |
| PRODUCTIVITY                      |                    |          |
| Max. Platform Occupancy           | 1 (in) / 0 (out)   |          |
| Platform Capacity                 | 230kg              | 507 lbs  |
| Drive Mode                        | Front wheels drive |          |
| Drive speed (Stowed)              | 4km/h              | 2.5mph   |
| Drive speed (Rised)               | 0.6km/h            | 0.37mph  |
| Gradeability                      | 25%                | 25%      |
| Tire size                         | 323x100mm          | 13"x4"   |
| POWER                             |                    |          |
| Power Source                      | 24V 145Ah          |          |
| Machine Weight (CE)               | 780kg              | 1720 lbs |

| MODELS                           | M0810JE (M2640JE) |          |
|----------------------------------|-------------------|----------|
| Measurements                     | Metric            | Imperial |
| Working Height Max.              | 10m               | 32'10"   |
| Platform Height (Raised)         | 8m                | 26'3"    |
| Horizontal Outreach              | 3.2m              | 10'6"    |
| Up and Over Clearance Max.       | 6.6m              | 21'8"    |
| Platform Size (LxW)              | 0.98x0.72m        | 39"x28"  |
| <b>A</b> Overall Length          | 2.6m              | 8'6"     |
| <b>B</b> Overall Width           | 1m                | 3'3"     |
| <b>C</b> Overall Height (Stowed) | 1.99m             | 6'6"     |
| <b>D</b> Wheelbase               | 1.2m              | 3'11"    |
| <b>E</b> Ground Clearance        | 0.1m              | 4"       |
| PRODUCTIVITY                     |                   |          |
| Max. Platform Occupancy          | 2 (in) / 1 (out)  |          |
| Platform Capacity                | 200kg             | 440 lbs  |
| Drive Mode                       | Rear Wheel        |          |
| Brakes                           | Rear Wheel        |          |
| Turntable Rotation               | 345°              | 345°     |
| Max. Drive Speed (Stowed)        | 5km/h             | 3mph     |
| Max. Drive Speed (Raised)        | 0.43km/h          | 0.27mph  |
| Gradeability                     | 25%               | 25%      |
| Tailswing                        | 0                 | 0        |
| Tire Size                        | 380x130mm         | 15"x5"   |
| POWER                            |                   |          |
| Power Source                     | 24V 250Ah         |          |
| Hydraulic Oil Capacity           | 6.5L              | 1.7gal   |
| Machine Weight (CE)              | 2720kg            | 5997 lbs |



# SC0407E / SC0610E

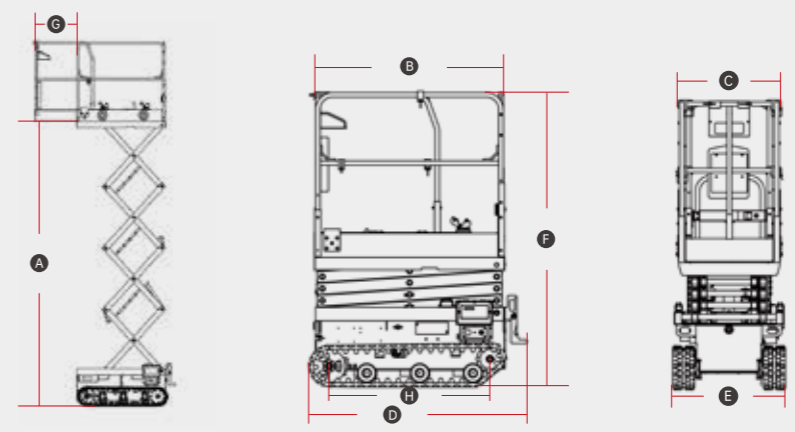
## CRAWLER SCISSOR LIFT

LGMG's crawler scissor lift is easy to drive on slopes or uneven ground, and has excellent obstacle-surpassing performance, which is very suitable for the environment with low ground pressure. Compact in size with 360 degree turning on the spot, suitable for use in narrow spaces. Humanized design, simple operation and more convenient maintenance



### SPECIFICATIONS

| Models                                | SC0407E (SC1532E)   |           | SC0610E (SC2240E)   |           |
|---------------------------------------|---------------------|-----------|---------------------|-----------|
| Measurements                          | Metric              | Imperial  | Metric              | Imperial  |
| Work Height Max.                      | 6.5m                | 21'4"     | 8.8m                | 28'10"    |
| <b>A</b> Platform Height-Raised       | 4.5m                | 14'9"     | 6.8m                | 22'4"     |
| <b>B</b> Platform Length              | 1.29m               | 4'3"      | 1.9m                | 6'3"      |
| <b>C</b> Platform Width               | 0.7m                | 2'4"      | 0.73m               | 2'5"      |
| <b>D</b> Overall Length               | 1.47m               | 4'10"     | 2.05m               | 6'9"      |
| <b>E</b> Overall Width                | 0.78m               | 2'7"      | 0.99m               | 3'3"      |
| <b>F</b> Overall Height-Guardrails Up | 1.99m               | 6'6"      | 2.19m               | 7'2"      |
| <b>G</b> Extension Deck               | 0.6m                | 2'        | 0.9m                | 2'11"     |
| <b>H</b> Wheelbase                    | 0.95m               | 3'1"      | 1.55m               | 5'1"      |
| Ground Clearance                      | 118mm               | 5"        | 115mm               | 5"        |
| <b>Productivity</b>                   |                     |           |                     |           |
| Max. Platform Occupancy               | 1 (in) / 0 (out)    |           | 2 (in) / 0 (out)    |           |
| Platform Capacity                     | 200kg               | 441 lbs   | 250kg               | 551 lbs   |
| Platform Capacity-Extension Deck      | 115kg               | 254 lbs   | 120kg               | 265 lbs   |
| Gradeability-Stowed                   | 25%                 | 25%       | 25%                 | 25%       |
| Min. Turning Radius                   | Turning on the spot |           | Turning on the spot |           |
| Raise/Lower Speed                     | 20s / 20s           | 20s / 20s | 36s / 36s           | 36s / 36s |
| <b>Power</b>                          |                     |           |                     |           |
| Power Source                          | 24V 130Ah           | 24V 130Ah | 24V 115Ah           | 24V 115Ah |
| <b>Hydraulic System</b>               |                     |           |                     |           |
| Hydraulic Oil Capacity                | 4L                  | 1gal      | 5.5L                | 1.4gal    |
| <b>Weight</b>                         |                     |           |                     |           |
| Machine Weight (CE/ANSI)              | 800kg               | 1764 lbs  | 1600kg              | 3528 lbs  |



# SERVICE CONCEPT

## Create Lasting Value, Boost Brand-building, Focus on Detail, Go Beyond Expectation

LGMG provides comprehensive pre-sale, sale and after-sale attentive service. Integrate precise service into any link closely related to each customer, and provide technical support, training programs, warranty and parts sales to customers during the whole machine life-cycle.



### SERVICE CONCEPT

#### TECHNICAL SUPPORT

LGMG service teams always provide remote technical support by phone or email and even on-site support with manuals, tools, information and service solutions.

### SERVICE CONCEPT

#### TRAINING SUPPORT

LGMG provides various training programs for operators and service technicians, helping rental companies to improve their service and training capabilities via dedicated courses prepared by LGMG teams either online or on-site.



### SERVICE CONCEPT

#### PARTS SUPPORT

LGMG provides sufficient stock of parts in LGMG's China headquarters, LGMG Europe/North America/Japan, and other global service centers. Accurate parts manuals and technical support teams are always available to answer your questions.



## TRAINING CASE

Rigorous trainings / Professional certifications



## APPLICATION SCENARIO

Perfect for different job sites

